



# Piper Repertory Theater Technical Information

---

Mesa Arts Center

8/19/2025

Mesa Arts Center  
Piper Repertory Theater Technical Information Packet  
1 East Main Street, Mesa, AZ 85201

**Table of Contents**

General Information ..... 4

    Technical Services: ..... 4

    Programming: ..... 4

    Box Office: ..... 4

        Area Hotels: ..... 4

Management ..... 5

    Green Room: ..... 5

    Policies: ..... 5

Load-In Area ..... 5

    Load-In Access to Stage: ..... 5

    Directions: ..... 5

Carpentry ..... 6

    Seating: ..... 6

    Stage Dimensions: ..... 6

    Stage Floor ..... 6

    House Draperies (Goods): ..... 8

    Line Set Data: ..... 8

    Support Areas: ..... 10

    Non-Use Areas ..... 10

Lighting ..... 10

    Power: ..... 10

    Control: ..... 10

    Dimmers: ..... 10

    Circuits: ..... 11

    Circuit Locations: ..... 11

    Equipment Inventory: ..... 11

    Followspots: ..... 12

    House Lighting Plot Description ..... 12

Mesa Arts Center  
Piper Repertory Theater Technical Information Packet  
1 East Main Street, Mesa, AZ 85201

Audio ..... 13

    Power: ..... 13

    Control Location:..... 13

    Hearing Assist System: ..... 13

    Paging System: ..... 13

    Production Communication: ..... 13

    Equipment Inventory: ..... 14

    Microphones: ..... 15

Video ..... 17

    Projector: ..... 17

    Projection Screen: ..... 17

    Video Equipment: ..... 17

Props ..... 18

    Orchestra Pit ..... 18

    Music: (subject to availability) ..... 18

    Portable shell: (subject to availability)..... 18

    Platforms: (subject to availability) ..... 18

    Choral Risers: (subject to availability)..... 18

    Dance Floor: ..... 18

    Lecterns: (shared throughout facility, subject to availability) ..... 18

    Dressing Rooms:..... 19

    Wardrobe Area: (subject to availability)..... 19

    Musician Warm Up Room/Multipurpose Room:..... 19

Mesa Arts Center  
Piper Repertory Theater Technical Information Packet  
1 East Main Street, Mesa, AZ 85201

## General Information

### Technical Services:

Director of Production

Mike Johnson

P: (480) 644-6617

E: [mike.johnson@mesaartscenter.com](mailto:mike.johnson@mesaartscenter.com)

### Programming:

Director of Theater

Randy Vogel

P: (480) 644-6603

E: [randall.vogel@mesaartscenter.com](mailto:randall.vogel@mesaartscenter.com)

### Production Supervisor: (Primary Advancing Contact)

Earl Fortner

P: (480) 644-6550

E: [earl.fortner@mesaartscenter.com](mailto:earl.fortner@mesaartscenter.com)

### Rental Contact:

E: [Rentals@mesaartscenter.com](mailto:Rentals@mesaartscenter.com)

### Box Office:

Andrew Douglas

P: (480) 644-6507

E: [andrew.douglas@mesaartscenter.com](mailto:andrew.douglas@mesaartscenter.com)

### Area Hotels:

#### Delta Marriott Mesa

200 North Centennial Way

Mesa, AZ 85201

P: (480) 898-8300

#### DoubleTree by Hilton Mesa

1011 West Holmes Ave

Mesa, AZ 85210

P: (480) 833-5555

#### Hyatt Place Mesa

1422 West Bass Pro Drive

Mesa, AZ 85201

P: (480) 969-8200

**Mesa Arts Center**  
**Piper Repertory Theater Technical Information Packet**  
1 East Main Street, Mesa, AZ 85201

## **Management**

### **Green Room:**

there is a dedicated green room in the upstage Hallway of Piper Theater with a patio

### **Policies:**

- Lobby typically opens 1 hour prior to curtain with house opening 45 minutes prior to curtain.
  - During summer lobby opens 1 hour 30 minutes prior to curtain
- The Fire Curtain must not be obstructed in any manner which could prevent its complete contact with the stage floor when deployed.
- All scenery drops and fabric must be flame proofed. Random testing of articles will occur.
- All wood must be flame-proofed (fire-treated).
- As per the Fire Marshal, all doors in the facility are fire rated fire doors and must be able to close completely and form a tight, air-proof seal.
- Maximum occupancy of the stage (blank stage) is 255 persons including performers and support personnel.

## **Load-In Area**

### **Load-In Access to Stage:**

- Two loading docks at stage level.
- Dock can accommodate 1 53' trailer (tractors have to detach), and 1 box truck simultaneously
- Driver must remain to move truck if necessary.
- Loading dock doors 10'W x 10'H
- Interior stage door is 8'11" W x 12' H
- Cargo must be ramped off or lifted off trucks. Loading Doors are at street level.
- There is no forklift on site
- Trucks and trailers must be moved to south surface lot
- Post-show storage is NOT available at the Mesa Arts Center. All items must leave at load-out. The Mesa Arts Center is not responsible for any items left behind.

### **Directions:**

1. From Phoenix take Loop 202 East.
2. Exit Country Club Drive and head south to Main St.
3. Turn Left (East) on Main St. and travel a half mile until you come to Surrine/Centennial Way.
  - a. Semi-Trucks, recommend passing Main St. and turning left on 1<sup>st</sup> Ave then left on S. Surrine.
4. Turn Right (South) on Surrine/Centennial Way
5. Take your first right into the service drive behind the Sunrise Bank. Follow the drive as it curves to the left. Park on the left, Performer entrance is on the right at the glass doors.

**Mesa Arts Center**  
**Piper Repertory Theater Technical Information Packet**  
 1 East Main Street, Mesa, AZ 85201

**Carpentry**

**Seating:**

House Capacity – 561 with orchestra lift seated

<b>Orchestra Section</b>	<b>Balcony</b>
311 Fixed (Orchestra Pit – 33 seats)	224 Fixed
4 Wheelchair	2 Wheelchair
12 Loose Chairs/Wheelchair	8 Loose Chairs/Wheelchair

**Stage Dimensions:**

Proscenium width: 39' 5"

Proscenium height: 23' 3"

SL Locking Rail to SR wall: 90' 7.5"

Stage Left wing: 28' 10"

Stage Left wall to fly rail pipe end: 20' 6"

Stage Left wall to Stage Left Side Tab: 16' 6"

Stage Right wing 22' 6"

Stage Right Locking Rail to fly rail pipe end: 14'

Stage Right Locking Rail to Stage Right Tab: 10'

There are pin rail galleries stage right and stage left at 21' above stage level and are 8' wide.

Plaster line to back wall: 36'

Plaster line to last line set (50): 35'

Control Room to Plaster Line: 58' 6"

House Mix Position to Plaster Line: 48'

Follow spot Booth to Center Stage: 88'

Gridiron: 56'

Plaster Line to Orchestra pit edge: 5' 6"

Orchestra Pit (33'L x 12'W radius design) 290sq. ft

Variable depth to 7' below stage level.

Static load capacity: 43,500 lbs.

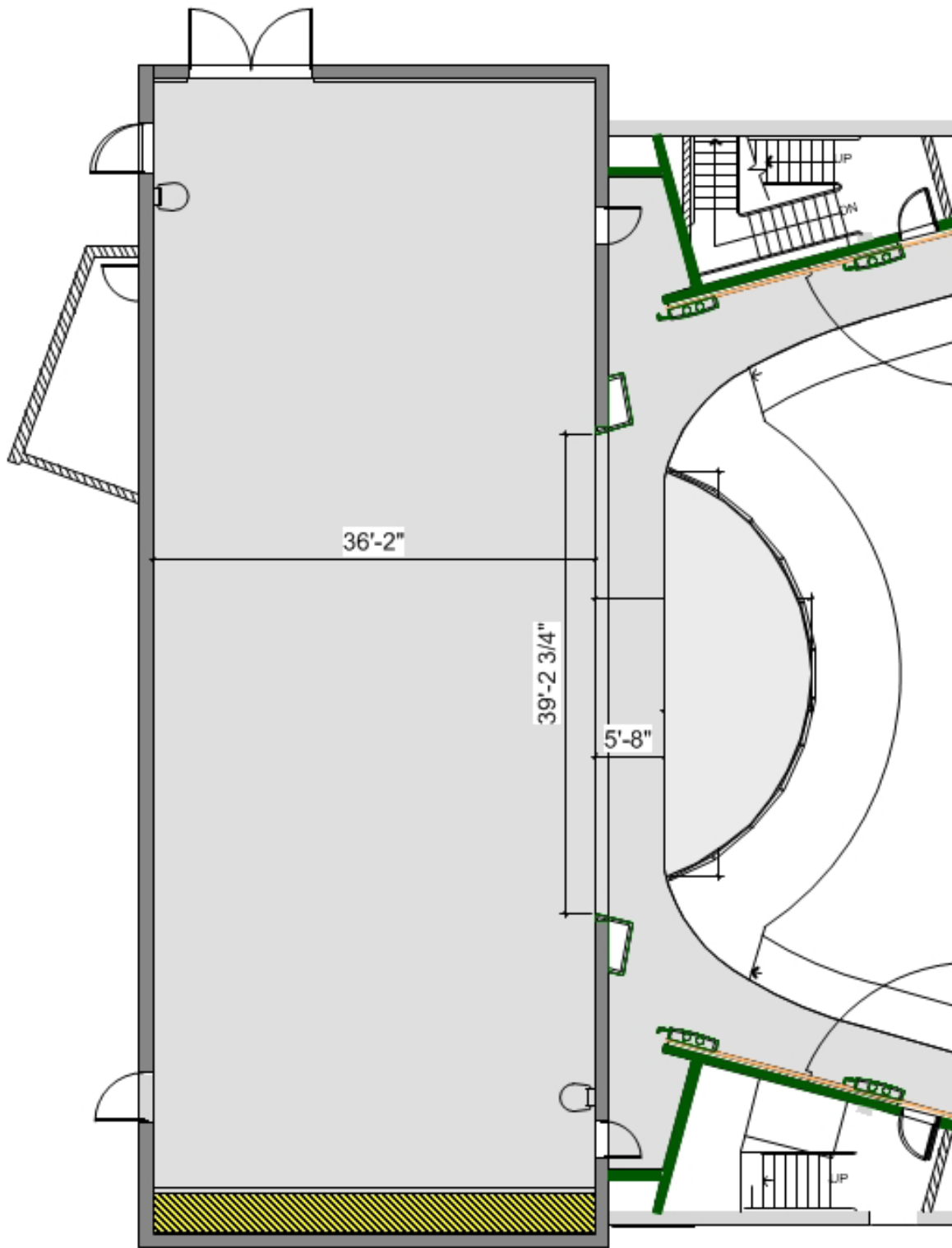
Lifting load capacity: 14,500 lbs.

Stage level runway (5' wide) and extends the entire length of the house chamber left and right with access from the stage.

**Stage Floor**

- 1" Maple Hardwood, painted black, laid over 2 sheets of ¾" plywood, laid on sleepers.
- Lagging into MAC floors is allowed, but all hardware must be Grade 5 or higher. Client will be responsible for all costs incurred to the MAC in the repair of the holes.
- No Traps are available

Mesa Arts Center  
Piper Repertory Theater Technical Information Packet  
1 East Main Street, Mesa, AZ 85201



**Mesa Arts Center**  
**Piper Repertory Theater Technical Information Packet**  
 1 East Main Street, Mesa, AZ 85201

**House Draperies (Goods):**

Drapery	Quantity	Size	Fullness	Fabric	Lining	Color	Notes
Main Border	1	56' x 15'	75% Sewn In	25 oz Velour	Black Ranger	Green	Nap Up
Main Drape	2	28' x 28'	75% Sewn In	25 oz Velour	Black Ranger	Green	Nap Up
Border	4	56' x 12'	None	25 oz Velour	None	Black	Nap Down
Leg	10	12' 9" x 28'	None	25 oz Velour	None	Black	Nap Down
DS Traveler	2	42' x 28'	50% Tied In	25 oz Velour	None	Black	Nap Down
Mid Traveler	2	42' x 28'	50% Tied In	25 oz Velour	None	Black	Nap Down
Black Scrim	1	56' x 30'	None	Sharkstooth	None	Black	
Full Stage Black	1	(4) 16' x 28' panels	50% tied in	25 oz Velour	None	black	Nap down
Cyclorama	1	56' x 30'	None	Lino	None	White	Seamless
Upstage black	1	4 20' X 28' panels	None	25 oz Velour	None	black	Nap down
Tabs	8	6' 9" x 30'	None	25 oz Velour	None	Black	Nap Down
Z-Tech Border	35	10' 3'	None	Heat Stop	None	Black	Shared
Z-Tech Border	10	4' x 10'	None	Heat Stop	None	Black	Shared

**Line Set Data:**

**Working Height of Battens:**

- High Trim: 53' 5"
- Low Trim: 3' 6"

**Battens:** 50 Battens, 56' Long, Schedule 40, 4 house electric pipes are truss battens

**Type:** Single Purchase

**Arbor Capacity:** 1680 Pounds per arbor

**Available Weight:** Located USR, Mid-Rail and Loading Rail

**Loading Galleries:** 2 Located Stage Right at 28' and 43' above stage floor

**Pin Rail:** Located Stage Right at 3' 6"

**Side Ladders:** There are 5 sets of ladders that are on tracks on either side of stage. 30" from center line. These ladders do fly.

**Side Tab Curtains:** There are 8 side curtains, 4 on each side. 32' from center line. These side tabs do fly.

**Mesa Arts Center**  
**Piper Repertory Theater Technical Information Packet**  
 1 East Main Street, Mesa, AZ 85201

<b>LUD 8-24-18</b>	<b>FROM</b>	<b>House Hang</b>
<b>LINE SET</b>	<b>PROSC</b>	<b>DESCRIPTION</b>
MT	1'	MAIN TEASER
MD	2'	MAIN DRAPE (TRAVELER)
3	3'	1ST BORDER
4	3' 6"	1ST LEGS
5	4'	GP
7	5'	1ST ELECTRIC
9	6'	
10	6' 6"	
11	7'6"	
12	8' 2"	
SRT	8' 10"	STAGE RIGHT TAB
13	9' 6"	DS TRAVELER / 2ND BORDER (CANNOT TRANSFER)
14	10' 2"	2ND LEGS
SLL	10' 10"	STAGE LEFT LADDERS
15	11' 6"	2ND ELECTRIC
17	12' 10"	
18	13' 6"	
19	14' 6"	PROJECTION SCREEN - 12'3" tall by 21' wide
20	15' 2"	
21	15' 10 "	
22	16' 6"	3RD BORDER
23	17' 2"	3RD LEGS
24	17' 10"	
26	19' 2"	3RD ELECTRIC
SRL	19' 10"	STAGE RIGHT LADDERS
27	20' 6"	
28	21' 6"	MID TRAVELER
29	22' 2"	
30	22' 10"	
31	23' 6"	
32	24' 2"	4TH BORDER
33	24' 10"	4TH LEGS
34	25' 6"	
SLT	26' 2"	STAGE LEFT TAB
35	26' 10"	4TH ELECTRIC
37	28' 6"	
38	29' 0"	5TH BORDER
39	29' 6"	
40	30' 0"	SCRIM
42	31' 0"	5TH ELECTRIC – CYC Lights
44	32' 0"	
45	32' 6"	
46	33' 0"	FULL STAGE BLACK
47	33' 6"	
48	34' 0"	5TH LEGS
49	34' 6"	CYCLORAMA
50	35' 0"	UPSTAGE BLACK

# Mesa Arts Center

## Piper Repertory Theater Technical Information Packet

1 East Main Street, Mesa, AZ 85201

### Support Areas:

#### Crossover:

There is no dedicated crossover. Closest crossover is the Upstage Hallway with Access to Stage Right and Stage Left

#### Access:

From Front of House: Hallway Stage Right (House Left) to Upstage Hallway

From Dressing Rooms: Dressing Rooms are located in the Upstage Hallway and on the 2<sup>nd</sup> floor, accessible via stairway in the Upstage Hallway

#### Storage:

There is no dedicated storage space for events. Events may store equipment in the loading dock and in the green painted areas in the 1<sup>st</sup> floor hallway and across the hall from the dressing rooms on the 2<sup>nd</sup> floor. Storage is not available before or after the show. All items must leave at load-out.

### Non-Use Areas

- As per the Fire Marshall, floor areas blocked off in red floor paint must never be obstructed.

## Lighting

### Power:

Quantity	Voltage	Phase	Amperage	Location	Connection
1	120/208	3 Phase	400a	Up Stage Right	Cam
2	120/208	3 Phase	200a	Up Stage Right	Cam
2	120/208	3 Phase	400a	Stage Left Wall	Cam
2	120/208	3 Phase	200a	Stage Left Wall	Cam
1	120/208	3 Phase	200a	Stage Left Pin Rail	Cam
1	120/208	3 Phase	200a	Gridiron Stage Right	Cam
1	120/208	3 Phase	200a	Proscenium Catwalk	Cam

### Control:

- ETC Ion XE20 one 20x20 fader wing as primary console
- 2048 Outputs
- Dedicated iPad aRFR
- ETCNET 3 Throughout Venue
- 5 ETCNET 3 portable Nodes

### Dimmers:

- 286 ETC Sensor Dimmers, 2.4kW dimmer
- 2 ETC Sensor Dimmers, 6kw dimmer

**Mesa Arts Center**  
**Piper Repertory Theater Technical Information Packet**  
 1 East Main Street, Mesa, AZ 85201

**Circuits:**

- 286 – 2.4kw circuits. Fixed Positions on Stage Right and Stage Left catwalks with Socopex multicable connections.

**Circuit Locations:**

Location	Dimmers	House Plot Location
1 <sup>st</sup> AP	80 – 91	1 <sup>st</sup> AP
2 <sup>nd</sup> AP	62 – 79	62-67 HR Box Boom, 75-79 HL Box Boom
3 <sup>rd</sup> AP	32 – 61	3 <sup>rd</sup> AP
4 <sup>th</sup> AP	1 – 31	4 <sup>th</sup> AP
Balcony Rail	92 – 97 + 288 (6k)	Balcony Rail
Orchestra Pit	110, 111	Orchestra Pit
Grid (Up Stage Center)	113 – 123 (2 Soco Connections)	SR Ladders
Grid (upstage Center)	492-497 & 486-491 (Soco Connections)	Stage Left Ladders
Stage Right Gallery	178 – 231 (9 Soco Connections)	2 <sup>nd</sup> and 4 <sup>th</sup> Electrics
Stage Left Gallery	124 – 177 (9 Soco Connections)	1 <sup>st</sup> and 3 <sup>rd</sup> Electrics
Stage Left Gallery	Additional 48 Ch. Rack 450-497	5 <sup>th</sup> Electric, SL Ladders, SL Gallery
Down Stage Right Wall (Stage level)	246, 247	Down Stage Right Wall (Stage level)
Down Stage Left Wall (Stage level)	244, 245	Down Stage Left Wall (Stage level)
Up Stage Right Wall (Stage level)	284 – 286	Up Stage Right Wall (Stage level)
Up Stage Left Wall (Stage level)	281 – 283	Up Stage Left Wall (Stage level)
Up Stage Center Wall (Stage level)	287B (6k)	Up Stage Center Wall (Stage level)
Stage Right Floor (Floor Pockets)	257 – 265	Stage Right Floor (Floor Pockets)
Stage Left Floor (Floor Pockets)	248 – 256	Stage Left Floor (Floor Pockets)
Up Stage Floor (Floor Pockets)	263 – 280	Up Stage Floor (Floor Pockets)
Down Stage Floor (Floor Pockets)	232 – 243	Down Stage Floor (Floor Pockets)
House Right Torm (in Proscenium)	98 – 103	House Right Torm (in Proscenium)
House Left Torm (in Proscenium)	104 – 109	House Left Torm (in Proscenium)
House Lights	301 – 315	House Lights

**Equipment Inventory:**

**Stage Instruments**

Quantity	Brand	Type	Wattage	Frame
8	ETC Source 4	10 Degree	750wt	12" x 12"
40	ETC Source 4	19 Degree	575wt	6.25" X 6.25"
52	ETC Source 4	26 Degree	575wt	6.25" X 6.25"
63	ETC Source 4	36 Degree	575wt	6.25" X 6.25"
10	ETC Source 4	50 Degree	575wt	6.25" X 6.25"
70	ETC Source 4	Par	575wt	7.5" X 7.5"
20	ETC Colorsource	Fresnel V	148.4W	7.5" X 7.5"
14	ETC Colorsource	Cyc	133W	

**Mesa Arts Center**  
**Piper Repertory Theater Technical Information Packet**  
1 East Main Street, Mesa, AZ 85201

**Followspots:**

- 2 Super Trouper (2K) Medium Throw 1600wt Follow spots located in enclosed spot booth at rear of house - catwalk level
- Follow spot booth to plaster line: 67' 9"
- Follow spot booth to plaster line horizontal distance: 60' 2"
- Follow spot booth to plaster line vertical distance: 31' 11"

**Cable:**

Soco, Stagepin and 2-fers are available

**Lighting Accessories:**

- (8) 12' Schedule 40 Boom Pipes with Floor Bases
- Floor bases for stage instruments
- Source 4 size A and B gobo holders
- Irises
- Gel frames

**House Lighting Plot Description**

- The Piper Theater house lighting plot has a full LED wash with a 13-44 degree motorized zoom
- A two-color high side wash is available from the 1<sup>st</sup>, 2<sup>nd</sup>, 3<sup>rd</sup> and 4<sup>th</sup> electrics over stage
- 20 fixtures are also available on electrics for overhead specials. (5 each on 1<sup>st</sup>, 2<sup>nd</sup>, 3<sup>rd</sup>, and 4<sup>th</sup> Electrics)
- 3 separate washes are possible from FOH using 30 Source Four 19 degree fixtures.
- LED Cyclorama Five-color mix of red, green, blue, indigo, and lime
- FOH box boom and balcony rail positions
- **NOTE: Not all fixtures may be available because they are being used on house plot**
- **Please speak to the MAC Production Supervisor to request a plot or more information**

**Extra equipment available (Subject to availability)**

- 4 High End Systems AF1000 Dataflash Strobe
- 2 Atomic 3000 Strobe
- Ultratec FX Radiance Haze Generator (Mounted on S.L. Midrail with a fan)
- 2 DF50 Diffusion Hazer
- Rosco 1700 Smoke Generator
- Martin Jem Gladiator Dynamic Low Fog Generator
- Ultratec LSG PFI-9D Low Fog Generator (additional equipment needed from outside vendor)
- Rosco Vapour Plus Fog Machine

**Mesa Arts Center**  
**Piper Repertory Theater Technical Information Packet**  
1 East Main Street, Mesa, AZ 85201

**Audio**

**Power:**

Quantity	Voltage	Phase	Amperage	Location	Connection
2	120/208	3 Phase	200a	Upstage Right Wall	Cam
2	120/208	3 Phase	200a	Stage Left Wall	Cam

**Control Location:**

Located in the center main floor of the house 48' from plaster line. If a client provides their own console 100' snake is needed to pull from DSL to the mix position. Cable tunnel terminates at DSL.

- If the monitor console needs to setup Down Stage Right, an additional 75' extension is needed. The venue can provide a 100' snake and a 32 channel splitter box. A 100' extension may also be available.

**Hearing Assist System:**

Infrared hearing assist system headsets are available to patrons via the house management staff. Show Program is distributed by the audio system Digital Signal Processor and sourced from the mixing console or ambient room mic.

The listen anywhere app. Patrons can download the listen anywhere app and join the network for access to the program feed.

**Paging System:**

Paging System is routed to the upstairs and downstairs hallways, dressing rooms, Green Room, and patio. Paging locations are located DSR, DSL and in the Lighting Control Booth.

Front of House video monitoring is available in the Green Room, DSR and DSL, and the dressing rooms.

**Production Communication:**

- 2 channel Clear-Com party line system w/ 7 wired single channel belt packs and headsets.
- 2 Clear-Com remote stations.
- 1 Clear Com FreeSpeak II 1.9GHz wireless base station w/5 Clear Com FSII-BP19, 6 wireless beltpacks and headsets.
- 2 Clear Com (1 TW-12B/1 TW-12C) interfaces available

**Mesa Arts Center**  
**Piper Repertory Theater Technical Information Packet**  
1 East Main Street, Mesa, AZ 85201

**Equipment Inventory:**

**Front of House Mixing Console:**

- Yamaha QL5

**FOH I/O Rack:**

- (2) Yamaha RI03224-2: I/O rack unit that features 32 analog inputs, 16 analog outputs, and eight digital AES/EBU output. Total of 64 analog inputs, 32 analog outputs, 16 digital AES/EBU outputs.

**Playback:**

- 1 Tascam CD-RW901SL
- 1 Tascam CD-RW900SL

**Speaker System: Renkus-Heinz P.A. package (included with rental of Piper Theater)**

- Left, Center, Right Clusters, Each. (Flown)
  - 1 Renkus-Heinz CELF15-2 W/SSL15-7 low frequency module
  - 2 Renkus-Heinz CDT520/94 Horns (1 Main, 1 down fill)
- 1 Renkus-Heinz CELF15-2K w/SSL15-7 Low frequency module/subwoofer (Sub Bridged Mono)
- 5 TRC61 Front Fills built in to front of stage (L-C-R configuration)
- 4 Channels of Monitor Amplification (additional channels subject to availability)

**Monitor Package Equipment (subject to availability and additional rental costs):**

- Yamaha CS-R3: Rivage PM3 Control Surface ○ Yamaha DSP-RX: DSP Engine w/120 Input s, 48 Mix Buses, 24 Matrices
  - Yamaha HY144-D-SRC: High Capacity I/O Card, Dante, Sample Rate Conversion
  - (2) Yamaha RI03224-2: I/O rack unit that features 32 analog inputs, 16 analog outputs, and eight digital AES/EBU output. Total of 64 analog inputs, 32 analog outputs, 16 digital AES/EBU outputs.
- Behringer X32
- 6 Yamaha CM-15V monitors
- 16 Renkus-Heinz PN151/M9 15" powered wedges
- 6 Renkus Heinz PN121/M12 12" powered wedges
- 12 QSC K12 powered speakers
- 2 QSC K-Subs
- 10 L-Acoustics X15 HiQ wedges
- 6 L-Acoustics X12 passive wedges

**Mesa Arts Center**  
**Piper Repertory Theater Technical Information Packet**  
 1 East Main Street, Mesa, AZ 85201

**Microphones:**

#	Make/Model	Type	#	Make/Model	Type
10	Shure SM 58	Cardioid dynamic vocal	2	AKG C1000S	Cardioid condenser Instrument with switchable polar patterns via diaphragm insert
1	Shure SM 58s	Cardioid dynamic vocal Switched	2	AKG 451 B	Cardioid Condenser
10	Shure SM 57	Super cardioid dynamic vocal/instrument	2	Sennheiser MD421	Cardioid dynamic instrument
2	Shure SM 81	Cardioid condenser Instrument	4	Sennheiser E614	Cardioid Condenser
4	Shure Beta 98	Miniature super cardioid condenser with Drum Mount	4	Sennheiser e604	Compact dynamic cardioid instrument microphone
1	Shure Beta 91	Half-cardioid condenser boundary microphone for kick drums	6	Whirlwind Director	Passive D.I. Box
1	Shure Beta 52	Large diaphragm cardioid dynamic kick drum bass	2	DOD 265	Passive D.I. Box
4	Crown PCC 160	Half-super cardioid condenser boundary	2	Rapco LTI-100	Laptop Interface
4	Audio Technica U853R	Cardioid condenser hanging type chorus	5	Hosa	5' 1/4" – 1/4" DI cable
1	AMT M40	Cardioid Condenser Piano	2	AKG C214	Large diaphragm condenser
2	Neumann KSM 184	Small cardioid Condenser			

(\*note-additional miscellaneous lavalier and head worn microphones are available in limited supply in our microphone inventory)

(\*note-additional miscellaneous clamps for piano, music stands and horn instruments available in limited quantity)

**Mesa Arts Center**  
**Piper Repertory Theater Technical Information Packet**  
1 East Main Street, Mesa, AZ 85201

**Facility shared wireless microphones (Based on Availability, Additional Charge Applicable):**

- (2) rack mounted Shure ULXD AD4Q receivers with 8 Shure ULXD2 handheld transmitters w/Shure SM58 capsules (Beta 87 capsules available) and 8 Shure ULXD1 belt packs w/Shure WL 154 cardioid lavalier capsules MM-PSM omnidirectional head worn microphones (Countryman E6 type) available.
- (1) rack mounted Shure ULXD AD4Q receivers with 4 Shure ULXD2 handheld transmitters w/Shure SM 58 capsules (Beta 58 capsules available) and 4 Shure ULXD1 belt packs w/Shure WL154 lavalier capsules MM-PSM omnidirectional head worn microphones (Countryman E6 type) available.
- (1) Rack mounted Shure ULXD AD4Q receivers with 4 Shure ULXD AD4Q handheld transmitters with Shure SM 58 capsules (Beta 58 capsules available) and 4 Shure ULXD1 belt packs with Shure WL154 Lavalier capsules and MM-PSM omnidirectional head worn microphones (Countryman E6 type) available
- (1) rack mounted Shure Axient AD4D in each venue with 2 AD2 handheld and 2 AD1 beltpack transmitters each. Countryman E5 head worn microphones available.
- 8 Shure Beta 58A capsules
- 7 Shure Beta 87A capsules
- 1 Shure SM58 capsules
- 4 KSM8 capsules
- 2 KSM9 capsules

Both racks include Shure UA-845 Antenna Distribution units and Shure UA870 active directional antennas

**Mesa Arts Center**  
**Piper Repertory Theater Technical Information Packet**  
1 East Main Street, Mesa, AZ 85201

## **Video**

### **Projector:**

- Barco DLP Laser Projector Model F90-4K13 Located on Balcony rail
  - Inputs: 3G-SDI, HDMI, DVI, HDBaseT

### **Projection Screen:**

- 12'3" tall by 21' wide Da-Lite Front Projection Screen. Screen is hung from a stage baton and typically lives 14'5" upstage of proscenium line

### **Video Equipment:**

- Roland V-800HD Mutli-format Video Switcher
  - 8 Channel, 16 Input (4 SDI, 4 Composite, 4 DVI-I/HDMI, 4 RGB/Component)
  - 6 Output (2 SDI + 2 DVI-D/HDMI + RGB/Component + Composite)
  - Multiviewer HDMI Output
- (3) MacBook Pro Laptop Computers (subject to availability)
- (2) Dell Windows based laptop
- (2) DSan Perfect Cue Mini

Mesa Arts Center  
Piper Repertory Theater Technical Information Packet  
1 East Main Street, Mesa, AZ 85201

## Props

### Orchestra Pit

Orchestra Pit (33'L x 12'W radius design) 290sq. ft – variable depth to 7' below stage level.  
Static load capacity: 43,500 lbs. Lifting load capacity: 14,500 lbs.

### Music: (subject to availability)

**Orchestra Chairs:** 198 Wenger Padded Black Chairs

**Cello Chairs:** 10 Wenger padded cello chairs

**Bass Stools:** 6 Wenger adjustable stools

**Music Stands:** 182 Wenger Music Stands

**Stand Lights:** 200 Stand Lights

**Conductor Podium:** Wenger 2-Step Podium with conductor stand

### Portable shell: (subject to availability)

8 Wenger Legacy Acoustical shell

### Platforms: (subject to availability)

24 Wenger 4'x8' platforms

8 Wenger 4'x4' platforms

Legs to raise platforms to 8", 16", 24" and 32" heights

### Choral Risers: (subject to availability)

13 Wenger Signature Risers

3 Wenger Signature Risers Reversed

### Dance Floor:

7 sections of Rosco Dance Floor: 5'3" x 60'

1 section of Rosco Dance Floor" 5'3" x 39' (Proscenium)

### Lecterns: (shared throughout facility, subject to availability)

2 Dalite Black Podiums

**Mesa Arts Center**  
**Piper Repertory Theater Technical Information Packet**  
1 East Main Street, Mesa, AZ 85201

## **Wardrobe**

### **Dressing Rooms:**

- 2 Dressing Room (4-6 person capacity each) with shower and bathroom. Located in US 1<sup>st</sup> Floor Hallway. Each with 1 wardrobe rack
- 3 Chorus Dressing Rooms (11-16 person capacity each) with showers (2) and bathroom. Located in US 2<sup>nd</sup> Floor Hallway. Each with 2 wardrobe racks

### **Wardrobe Area: (subject to availability)**

- Main laundry facility is located on the 2nd floor. This is shared between all theaters at the Mesa Arts Center and is subject to availability.
- Single Washer/Dryer may be available adjacent to Playhouse greenroom. Contact Event Services Coordinator for availability.
- 1 clothes rack is assigned to each dressing room. 6 more racks may be available in the wardrobe room
- 3 iron and 3 ironing boards
- 6 steamers
- 2 Whirlpool washing machines
- 2 Whirlpool dryers

### **Musician Warm Up Room/Multipurpose Room:**

- Shared between all theaters at the Mesa Arts Center (Available based on other theaters' needs)
- Located in US 1<sup>st</sup> Floor Hallway
- Sound Dampened