



Anita Cox Farnsworth Studio Theater Technical Information

Mesa Arts Center

7/19/2025

Mesa Arts Center
Anita Cox Farnsworth Studio Theater Technical Information Packet
1 East Main Street, Mesa, AZ 85201

Table of Contents

General Information 4
 Technical Services: 4
 Programming..... 4
 Box Office:..... 4
 Rental Contact:..... 4
 Area Hotels:..... 4
Management:..... 5
 Green Room:..... 5
 Policies: 5
Load-In Area 5
 Load-In Access to Stage:..... 5
 Directions: 5
Carpentry 6
 Seating:..... 6
 Stage Dimensions:..... 6
 Stage Floor 6
 Seating Chart Front 65 Seats (Standard room setup) 7
 Seating Chart 2 Sided 99 Seats (typical setup)..... 8
 Seating Chart 1A (Typical setup) 9
 Studio Empty Room 10
 House Draperies (Goods):..... 11
 Support Areas: 11
Lighting..... 11
 Control: 11
 Dimmers:..... 11
 Circuits: 11
 Circuit Locations:..... 12

Mesa Arts Center
Anita Cox Farnsworth Studio Theater Technical Information Packet
1 East Main Street, Mesa, AZ 85201

Equipment Inventory: 13
House Lighting Plot Description 13
Audio 13
 Control Location: 13
 Hearing Assist System: 13
 Paging System: 13
 Production Communication: 13
 Equipment Inventory: 14
Props 15
 Music: 15
 Platforms: 15
 Dance Floor: 15
 Lecturns: 15
Wardrobe 15
 Dressing Rooms: 15
 Wardrobe Area: 15

Mesa Arts Center
Anita Cox Farnsworth Studio Theater Technical Information Packet
1 East Main Street, Mesa, AZ 85201

General Information

Technical Services:

Director of Production
Mike Johnson
P: (480) 644-6617
E: mike.johnson@mesaartscenter.com

Programming:

Director of Theater
Randy Vogel
P: (480) 644-6603
E: randall.vogel@mesaartscenter.com

Production Supervisor: (Primary Advancing Contact)

Earl Fortner
P: (480) 644-6550
E: earl.fortner@mesaartscenter.com

Rental Contact:

E: Rentals@mesaartscenter.com

Box Office:

Andrew Douglas
P: (480) 644-6507
E: andrew.douglas@mesaartscenter.com

Area Hotels:

Delta Marriott Mesa
200 North Centennial Way
Mesa, AZ 85201
P: (480) 898-8300

DoubleTree by Hilton Mesa
1011 West Holmes Ave
Mesa, AZ 85210
P: (480) 833-5555

Hyatt Place Mesa
1422 West Bass Pro Drive
Mesa, AZ 85201
P: (480) 969-8200

Mesa Arts Center
Anita Cox Farnsworth Studio Theater Technical Information Packet
1 East Main Street, Mesa, AZ 85201

Management

Green Room:

There is a dedicated green room for the Studio Theatre with a patio that can be shared with the Playhouse theater

Policies:

- Lobby typically opens 1 hour prior to curtain with house opening 45 minutes prior to curtain.
 - During summer lobby opens 1 hour 30 minutes prior to curtain
- The Fire Curtain must not be obstructed in any manner which could prevent its complete contact with the stage floor when deployed.
- All scenery drops and fabric must be flame proofed. Random testing of articles will occur.
- All wood must be flame-proofed (fire-treated).
- All doors in the facility are fire rated and must not be obstructed in any way to prevent their closure.
- Maximum occupancy of the entire theater with a blank stage, is 107 persons. This includes audience members, performers, and support personnel.

Load-In Access to Stage:

- Two loading docks at stage level.
- Dock can accommodate 1 53' trailer (tractors have to detach), and 1 box truck simultaneously
- Driver must remain to move truck if necessary.
- Loading dock doors 10'W x 10'H
- Interior stage door is 8'11" W x 12' H
- Cargo must be ramped off or lifted off trucks. Loading Doors are at street level.
- There is no forklift on site
- Trucks and trailers must be moved to south surface lot
- Post-show storage is NOT available at the Mesa Arts Center. All items must leave at load-out. The Mesa Arts Center is not responsible for any items left behind.

Directions:

1. From Phoenix take Loop 202 East.
2. Exit Country Club Drive and head south to Main St.
3. Turn Left (East) on Main St. and travel a half mile until you come to Serrine/Centennial Way
4. Turn Right (South) on Serrine/Centennial Way
5. Take your first right into the service drive behind the Sunrise Bank. Follow the drive as it curves to the left. Park on the left, Performer entrance is on the right at the glass doors.

Mesa Arts Center
Anita Cox Farnsworth Studio Theater Technical Information Packet
1 East Main Street, Mesa, AZ 85201

Carpentry

Seating:

House Capacity: There are multiple Seating options available (see pages 7-9). These are the most common setups. Please contact the Production Supervisor for more options and pricing.

Stage Dimensions:

Room Dimensions: 41' 10" wide x 40' 6" long

Gridiron: 15' Average (pipes are 14' 6", 15' or 15' 6" depending on location)

Stage Floor

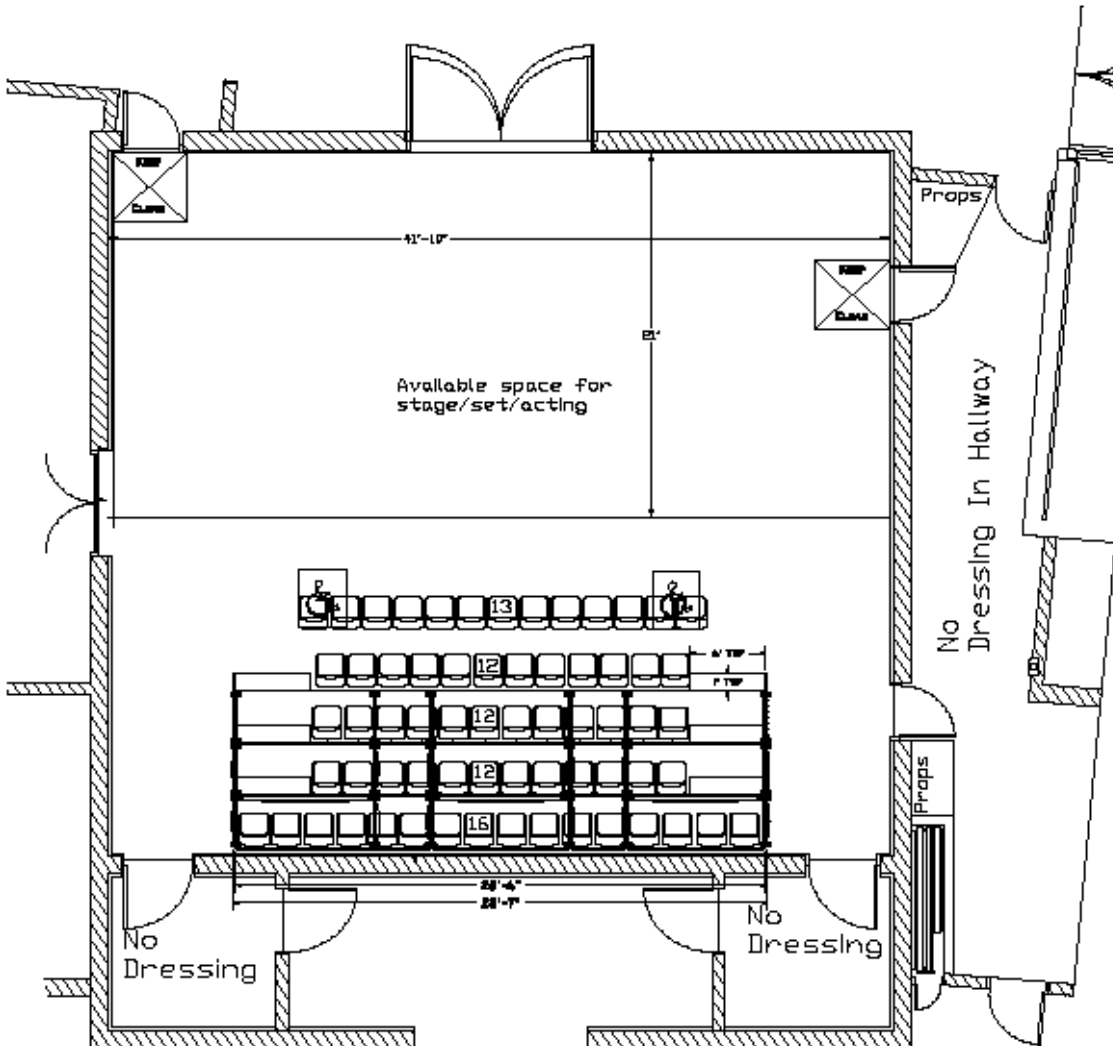
- 1" Maple Hardwood, painted black, laid over 2 sheets of $\frac{3}{4}$ " plywood, laid on sleepers.
- Lagging into MAC floors is allowed, but all hardware must be Grade 5 or higher. Client will be responsible for all costs incurred to the MAC in the repair of the holes.
- No Traps are available

Non-Use Areas

- As per the Fire Marshall, floor areas blocked off in red floor paint must never be obstructed.

Mesa Arts Center
Anita Cox Farnsworth Studio Theater Technical Information Packet
1 East Main Street, Mesa, AZ 85201

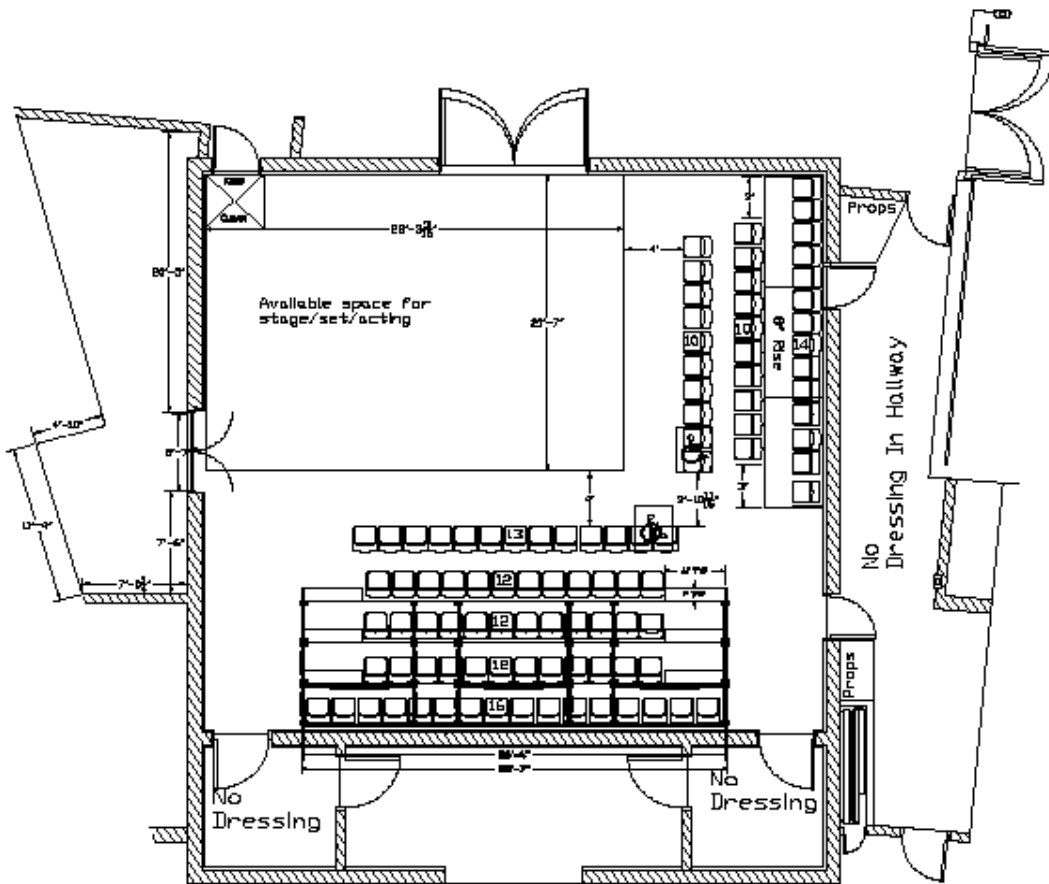
Seating Chart Front 65 Seats (Standard Setup)



Front
65 Seats or
61 Seats+2 Wheel Chairs

Mesa Arts Center
Anita Cox Farnsworth Studio Theater Technical Information Packet
1 East Main Street, Mesa, AZ 85201

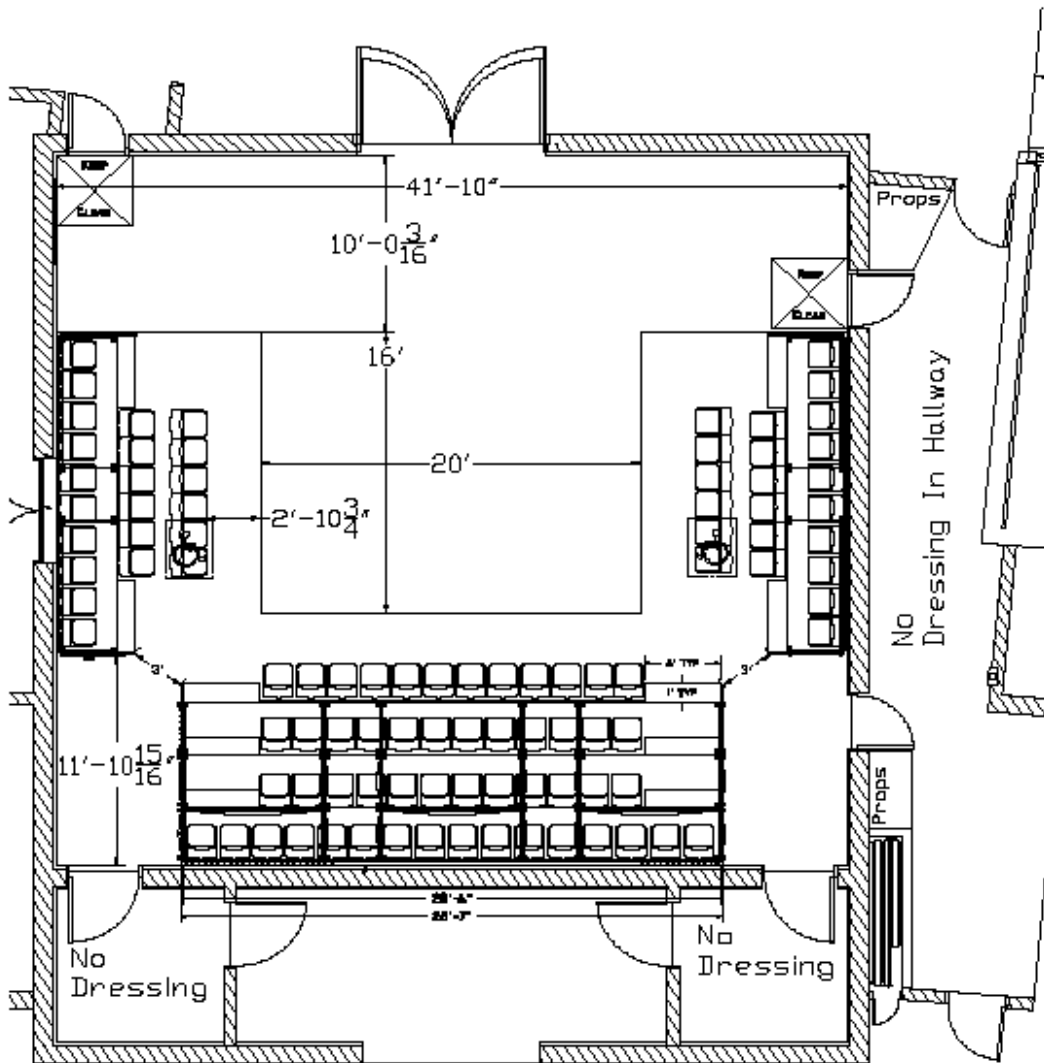
Seating Chart 2 Sided 99 Seats (Typical Setup)



2 Sided
99 Seats or
95 Seats+2 Wheel Chairs

Mesa Arts Center
Anita Cox Farnsworth Studio Theater Technical Information Packet
1 East Main Street, Mesa, AZ 85201

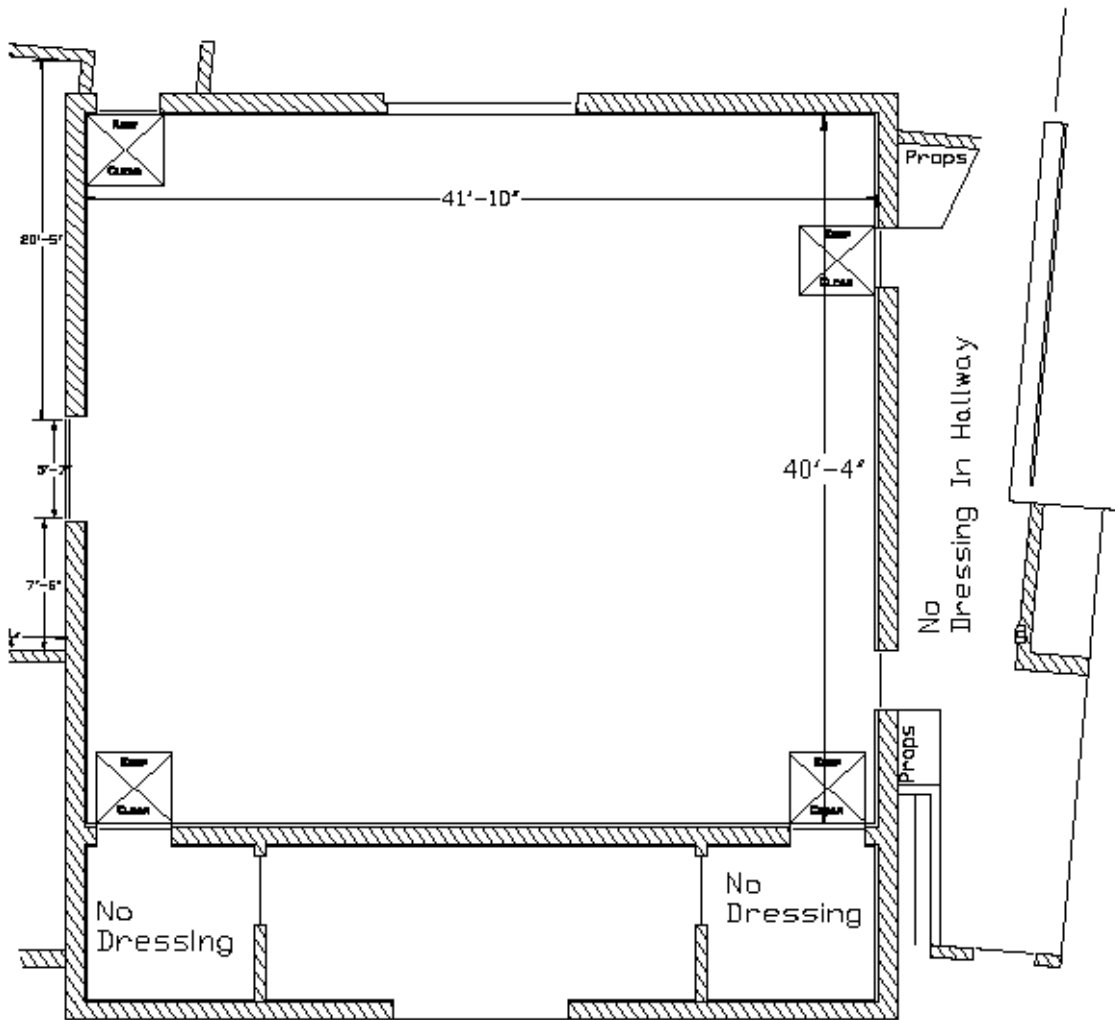
Seating Chart 1A (Typical Setup)



STUDIO THEATER 1A
96 Seats or
92 Seats+2 Wheel Chairs

Mesa Arts Center
Anita Cox Farnsworth Studio Theater Technical Information Packet
1 East Main Street, Mesa, AZ 85201

Studio Empty room (Extra charges may apply)



STUDIO THEATER
Empty room

Mesa Arts Center
Anita Cox Farnsworth Studio Theater Technical Information Packet
 1 East Main Street, Mesa, AZ 85201

House Draperies (Soft Goods):

Draperies	Quantity	Size	Fullness	Fabric	Lining	Color	Notes
Border	2	40' x 3'	None	25 oz Velour	None	Black	Nap Down
Leg	4	8' x 15'	None	25 oz Velour	None	Black	Nap Down
Blackout Panels	3	15' x 15'	None	25 oz Velour	None	Black	Nap Down
Cyclorama	1	40' x 15'	None	Lino	None	White	Seamless
Upstage Blackout	1	42' x 14'9"	None	20 oz Crescent	None	Black	Custom fit to upstage wall

Support Areas:

Crossover:

There is no dedicated crossover. Closest crossover is the Loading Dock Upstage with Access to Stage Right and Stage Left

Access:

From Front of House: Hallway Stage Left (House Right) to Upstage Hallway

Dressing Rooms are located on the 2nd floor in the backstage hallway. Dressing rooms are accessible by elevator in loading dock area.

There is a curtained off area in loading dock to create backstage space for props and quick change booths.

Storage:

There is no dedicated storage space for events. Events may store equipment in the yellow box east of the loading doors as well as the grey painted areas across from the dressing rooms on the second floor. Dock Space must be confined to area determined by the Mesa Arts Center, as this dock is shared between 3 theatres.

Lighting

Control:

- ETC Ion with 2x20 Fader Wing
- 1024 Outputs

Dimmers:

- 132 ETC Sensor Dimmers, 2.4kW dimmer

Circuits:

- 132 – 2.4kw circuits. Fixed Positions on Grid with stagepin tail connections.
- Grid pipes vary from 14' 6" to 15' 6"

Mesa Arts Center
Anita Cox Farnsworth Studio Theater Technical Information Packet
1 East Main Street, Mesa, AZ 85201

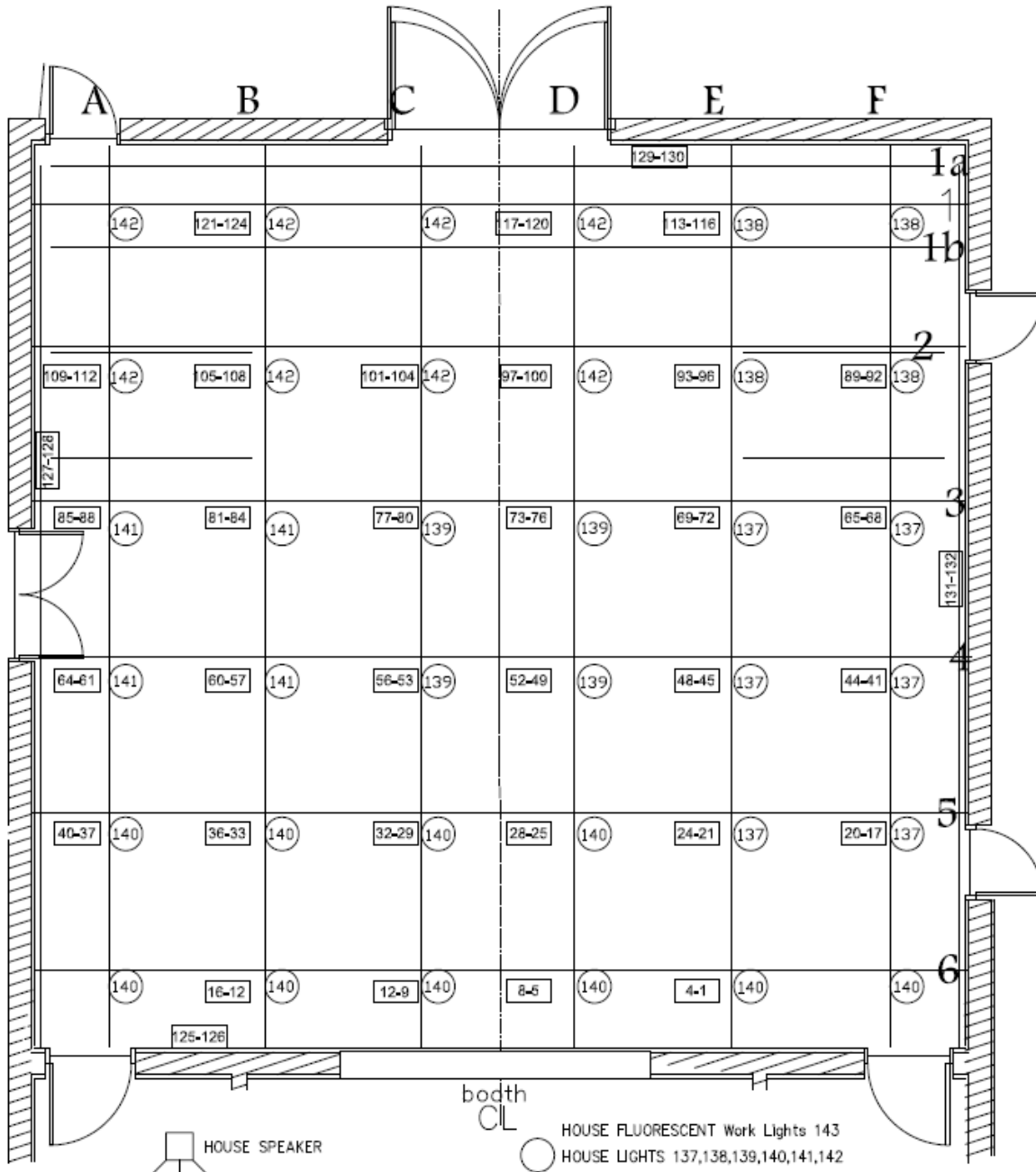
- Circuits 125 – 132 are at ground level, all other circuits are in the grid area

Mesa Arts Center

Anita Cox Farnsworth Studio Theater Technical Information Packet

1 East Main Street, Mesa, AZ 85201

Circuit Locations:



Mesa Arts Center
Anita Cox Farnsworth Studio Theater Technical Information Packet
 1 East Main Street, Mesa, AZ 85201

Stage Instruments:

Quantity	Brand	Type	Wattage	Frame
30	ETC Source 4	36 Degree	575wt	6.25" X 6.25"
30	ETC Source 4	50 Degree	575wt	6.25" X 6.25"
30	ETC Fresnel	7" Fresnel	575wt	7.5" X 7.5"
5	L&E	3 Cell Cyc	1 kw	10" x 13.5"
20	ETC Colorsources	Par deep blue	40 Lumileds	7.5" X 7.5"

Cable and Accessories:

STAGE PIN CABLE				ADAPTERS		MULTI-PIN		
5'	10'	20'	2-FER	EDISON-PIN	PIN-EDISON	30'	B/IN	B/OUT
25	20	10	17	2	10	1	1	1

19°-50° GEL FRAME	FRESNEL GEL FRAME	B-SIZE GOBO HOLDER	EDISON EXTENSION CORDS	Power Strips
115	58	60	6 – 25' 5 – 50'	4

House Lighting Plot Description

There is a simple house plot. 4 rows of 5 of the LED Pars.

Cable:

Soco, Stagepin and 2-fers are available

Lighting Accessories:

Floor bases for stage instruments
 Source 4 size A and B gob holders
 irises

Extra equipment available (Subject to availability)

- 4 High End Systems AF1000 Dataflash Strobe
- 2 Atomic 3000 Strobe
- Ultratec FX Radiance Haze Generator

Mesa Arts Center
Anita Cox Farnsworth Studio Theater Technical Information Packet
1 East Main Street, Mesa, AZ 85201

- 2 DF50 Diffusion Hazer
- Rosco 1700 Smoke Generator
- Martin Jem Gladiator Dynamic Low Fog Generator
- Ultratec LSG PFI-9D Low Fog Generator (additional equipment needed from outside vendor)
- Rosco Vapour Plus Fog Machine

Audio

Control Location:

Located in the booth on the downstage wall, 15' in the air. The Control Booth is located behind booth windows. The windows do slide open.

Hearing Assist System:

Infrared hearing assist system headsets are available to patrons via the house management staff. Show Program is distributed by the audio system Digital Signal Processor and sourced from the mixing console or ambient room mic.

The listen anywhere app. Patrons can download the listen anywhere app and join the network for access to the program feed.

Paging System:

Paging System to the upstage hallway, upstairs backstage hallway, and dressing rooms. Paging location is in the Lighting Control Booth.

Production Communication:

Single Channel Clear-Com Production Communication System. 5 wired belt packs are available, 1 Clear-Com Squawk Box, and 5 headsets are available.

Equipment Inventory:

Front of House Mixing Consoles:

- Behringer X32

Processing Gear:

- 1 Behringer S3216 Stagebox
- 1 Tascam MD-CD1 CD Player/Mini Disc Player (independent playback)
- 1 Denon DN-C550R CD Player/Recorder
- 1 Furman PL-8 series power conditioners

Speaker System:

Tannoy P.A. package (comes with rental of Studio Theater)

- 4 Tannoy V12 Full range Loudspeakers (Hanging, can be moved)
- 2 Yamaha SM-15V Stage Monitors
- 4 channels of amplification for PA speakers and monitor speakers

Mesa Arts Center
Anita Cox Farnsworth Studio Theater Technical Information Packet
 1 East Main Street, Mesa, AZ 85201

Microphones:

#	Make/Model	Type	#	Make/Model	Type
4	Shure SM 58	Cardioid dynamic vocal	2	DOD 265	Direct Input Box
4	Shure SM 57	Super cardioid dynamic vocal/instrument	1	LTI-100	Laptop Interface
4	Sennheiser E614	Cardioid Condenser	2 CH	Shure Axient Wireless	2 Channels of wireless mics with handheld or lavalier transmitters

Cable:

Quantity	Item
12	10' XLR
12	25' XLR
6	50' XLR
1	50' 12 channel XLR Snake
2	25' NL2 (for passive monitors)
2	50' NL2 (for passive monitors)
2	10' ¼" Instrument Cables

Facility shared wireless microphones (Based on Availability, Additional Charges Applicable):

- 2 rack mounted Shure ULXD AD4Q receivers with 8 Shure ULXD2 handheld transmitters w/Shure SM58 capsules (Beta 87 capsules available) and 8 Shure ULXD1 belt packs w/Shure WL 154 cardioid lavalier capsules MM-PSM omnidirectional head worn microphones (Countryman E6 type) available.
- 1 rack mounted Shure ULXD AD4Q receivers with 4 Shure ULXD2 handheld transmitters w/Shure SM 58 capsules (Beta 58 capsules available) and 4 Shure ULXD1 belt packs w/Shure WL154 lavalier capsules MM-PSM omnidirectional head worn microphones (Countryman E6 type) available.
- 1 Rack mounted Shure ULXD AD4Q receivers with 4 Shure ULXD AD4Q handheld transmitters with Shure SM 58 capsules (Beta 58 capsules available) and 4 Shure ULXD1 belt packs with Shure WL154 Lavalier capsules and MM-PSM omnidirectional head worn microphones (Countryman E6 type) available
- 1 rack mounted Shure Axient AD4D in each venue with 2 AD2 handheld and 2 AD1 beltpack transmitters each. Countryman E5 head worn microphones available.
- 8 Shure Beta 58A capsules
- 7 Shure Beta 87A capsules
- 1 Shure SM58 capsules
- 4 KSM8 capsules
- 2 KSM9 capsules

Mesa Arts Center
Anita Cox Farnsworth Studio Theater Technical Information Packet
1 East Main Street, Mesa, AZ 85201

Both racks include Shure UA-845 Antenna Distribution units and Shure UA870 active directional antennas

Props

Music: (subject to availability)

Orchestra Chairs: 198 Wenger Padded Black Chairs

Cello Chairs: 10 Wenger padded cello chairs

Bass Stools: 6 Wenger adjustable stools

Music Stands: 182 Wenger Music Stands

Stand Lights: 200 Stand Lights

Conductor Podium: Wenger 2-Step Podium with conductor stand

Portable shell: (subject to availability)

8 Wenger Legacy Acoustical shell

Platforms: (subject to availability)

24 Wenger 4'x8' platforms

8 Wenger 4'x4' platforms

Legs to raise platforms to 8", 16", 24" and 32" heights

Choral Risers: (subject to availability)

13 Wenger Signature Risers

3 Wenger Signature Risers Reversed

Dance Floor:

5 sections of Rosco Dance Floor: 5'3" x 35'

Lecterns:

2 Da lite Black Podiums (subject to availability)

Wardrobe

Dressing Rooms:

- 3 Dressing Rooms (5 person capacity) with showers (1) and bathroom. Located in upstage 2nd Floor Hallway
- 1 Dressing Rooms (8 person capacity) with shower (1) and bathroom. Located in upstage 2nd Floor Hallway

Wardrobe Area/Laundry Facility: (subject to availability)

- Main laundry facility is located on the 2nd floor. This is shared between all theaters at the Mesa Arts Center and is subject to availability.

Mesa Arts Center
Anita Cox Farnsworth Studio Theater Technical Information Packet
1 East Main Street, Mesa, AZ 85201

- Single Washer/Dryer may be available adjacent to Playhouse greenroom. Contact Event Services Coordinator for availability.
- 1 clothes rack is assigned to each dressing room. 6 more racks may be available in the wardrobe room
- 3 iron and 3 ironing boards
- 6 steamers
- 2 Whirlpool washing machines
- 2 Whirlpool dryers