

2022-2023

# SEASON BROCHURE



Photo Credit: Evan Zimmerman for MurphyMade



Photo Credit: © Sally Gee

# PERFORMING LIVE



STOMP  
Created by Luke Cresswell and Steve McNicholas  
© Steve McNicholas



MESA  
ARTS  
CENTER

mesa·az

# CONCERTS & EVENTS



JUL  
9

## MATT FRASER: AMERICA'S TOP PSYCHIC MEDIUM

SAT, JUL 9 | 8:00 PM | IKEDA THEATER | \$49 - \$69

Matt Fraser is America's top psychic medium and star of the hit television series *Meet the Frasers* on E!. His sold-out live events, television appearances, and popular private readings bring healing, hope and laughter to a global audience of fans and followers around the world. From heart-felt emotional readings to stunning revelations, Matt Fraser has audiences on the edge of their seats with his outrageous personality and unique approach to mediumship. *Presented in partnership with R Entertainment.*

## KURTIS CONNER

SUN, AUG 7 | 7:30 PM | IKEDA THEATER | \$40 - \$75

Performer, podcaster, and global YouTube sensation, Kurtis Conner is bringing his freshest, funniest material yet to the stage. Conner quickly found an audience on Vine, later migrating to YouTube and growing that audience to over 3.7 million subscribers worldwide. Conner has appeared on stage alongside collaborators Danny Gonzalez and Drew Gooden, and also hosts the *Very Really Good* podcast. *Presented in partnership with Tobin Entertainment.*



AUG  
7

## AMERICA

SUN, AUG 21 | 7:30 PM | IKEDA THEATER | \$55 - \$95

America founding members, Gerry Beckley and Dewey Bunnell (along with former band mate, the late Dan Peek) met in high school in the late 1960s and harmonized their way to the top of the charts on the strength of their signature song "A Horse With No Name." America had an impressive string of hits following the success of their first #1 single. More than forty years later, these friends are still making music together and thrilling audiences with their timeless sound. *Presented in partnership with R Entertainment.*



AUG  
21

## WHOSE LIVE ANYWAY?

THU, SEP 8 | 7:30 PM | IKEDA THEATER | \$35 - \$55

Whose Live Anyway?, the critically-acclaimed improv comedy show, features Ryan Stiles along with fellow comics Greg Proops, Jeff Davis and Joel Murray. Together they perform many of the hilarious games made famous on their Emmy®-nominated TV series, *Whose Line Is It Anyway?*, which aired on ABC from 1998 to 2004 and returned to the airwaves in 2013 on The CW, where it's currently about to enjoy its 8th season.

LIMITED SEATING AVAILABLE



SEP  
8





## CLANNAD: THE FAREWELL TOUR

TUE, SEP 13 | 7:30 PM | IKEDA THEATER | \$39.50 - \$69.50

Clannad was formed by siblings Moya, Ciarán and Pól Brennan and their uncles Noel and Pádraig Duggan. Fusing elements of traditional Irish music and more contemporary folk, new age and rock they have created a beautifully ethereal sound which combines haunting melodies and mesmerizing vocals to transcend the sands of time. *Presented in partnership with Live Nation.*

## MARIACHI HERENCIA DE MEXICO WITH SPECIAL GUEST LUPITA INFANTE: CUANDO MEXICO CANTA

SAT, SEP 17 | 8:00 PM | IKEDA THEATER | \$25 - \$45

The Latin GRAMMY®-nominated group of young Mexican-American musicians, recognized as the new ambassadors of the mariachi tradition, perform a vibrant tribute to the golden age of Mexican music. Joined by the beautiful Lupita Infante, granddaughter of Mexican icon Pedro Infante, Mariachi Herencia de México and Infante honor the legacy they inherited with a colorful and unforgettable experience of Mexican music and culture.



## THE MUSIC OF CREAM

SAT, SEP 24 | 8:00 PM | IKEDA THEATER | \$35 - \$55

Cream was the blueprint for every supergroup to follow and the heavy blues precursor to Hendrix, Zeppelin and more. Fifty years later, the pedigree of that hallowed trilogy come together to pay tribute. Kofi Baker (son of Ginger) and Malcolm Bruce (son of Jack) unite with Will Johns (Eric's nephew by marriage and son of Zeppelin/Stones/Hendrix engineer Andy) to perform songs such as "Strange Brew," "Sunshine of Your Love," "Crossroads" and "Badge."

## TOWER OF POWER

FRI, OCT 7 | 8:00 PM | IKEDA THEATER | \$30 - \$60

With a history 50+ years in the making, Tower of Power has been a funk institution since 1968, knocking out hits like "What is Hip," "So Very Hard to Go," "This Time It's Real," and "You're Still A Young Man" while lending their soulful sound to collaborations with Santana, the Grateful Dead, Huey Lewis, Justin Timberlake and everyone in-between.





Photo Credit: © Alessandro Martino

OCT  
14

## NELLA

FRI, OCT 14 | 7:30 PM | PIPER THEATER | \$40

Nella released her debut album *Voy* in 2019, written and produced by Javier Limón for which she won Best New Artist at the 2019 Latin GRAMMY® Awards. Born in Isla Margarita, an island in the Caribbean Sea off the coast of Venezuela, Nella has performed with artists such as Alejandro Sanz, Jennifer Lopez, Susana Baca and Carlos Vives.

## THE FAB FOUR - THE ULTIMATE TRIBUTE

SAT, OCT 22 | 8:00 PM | IKEDA THEATER | \$35 - \$65

The Fab Four is elevated far above every other Beatles Tribute due to their precise attention to detail. This incredible stage show includes three costume changes representing every era of the Beatles ever-changing career. Hear such classics as "Can't Buy Me Love," "Yesterday," "Here Comes the Sun" and "Hey Jude." *Presented in partnership with Emporium Presents.*



OCT  
22

LIMITED SEATING AVAILABLE



Photo Credit: Ester Segarra

NOV  
5

## WARDRUNA

SAT, NOV 5 | 8:30 PM | IKEDA THEATER | \$39.50 - \$59.50

WARDRUNA have had vast worldwide success, transcending music genres, cultures and languages while being renowned for their innovative and genre-creating renditions of ancient Nordic traditions. The group's musical contributions to History Channel's TV series *VIKINGS*—which consists of substantial work on the show's musical score and appearances by EINAR—have exposed their music to a broad audience worldwide. *Presented in partnership with Emporium Presents.*

## BELINDA CARLISLE

SUN, NOV 6 | 7:30 PM | IKEDA THEATER | \$27 - \$67

In an everchanging landscape of shifting musical trends, few artists stand the test of time. Go-Go's founder and lead vocalist, Belinda Carlisle is one of those rare talents who continues to remain relevant after nearly four decades in the business. Amidst changing tastes, the gifted and glamorous singer-songwriter has indelibly touched the hearts of pop fans around the world with her unique blend of gutsy vocals, emotively charged melodies and picturesque lyrics.



NOV  
6



## LILA DOWNS

SAT, NOV 12 | 8:00 PM | IKEDA THEATER | \$35 - \$60

Mexican American singer and activist Lila Downs has earned her multiple GRAMMY® and Latin GRAMMY® Awards. A commanding presence at center stage, Downs, “no stranger to raising hell and consciousness through the power of song” (*Rolling Stone*), with her superhuman vocal range and a deeply empathetic spirit, she champions the causes of immigrants, women and indigenous groups in her genre-hopping compositions, pain, suffering and redemption, through the metaphor of Mexico’s ubiquitous chili pepper.

## DISNEY DCAPPELLA

THU, NOV 17 | 7:30 PM | IKEDA THEATER | \$24.50 - \$64.50

DCappella is Disney Music Group’s premier a cappella singing sensation. Known for their reimagined classics from the Disney songbook, the group originally came together as a result of a nationwide search for the best vocal performing talent in a cappella and stage. *Presented in partnership with Emporium Presents.*



## AN EVENING WITH BRIAN CULBERTSON FEATURING MARCUS ANDERSON & MARQUEAL JORDAN

SUN, NOV 20 | 7:30 PM | IKEDA THEATER | \$46.50 - \$56.50

VIP PACKAGES AVAILABLE

Brian Culbertson, an award-winning multi-instrumentalist, songwriter and producer known for his distinct brand of genre-crossing contemporary jazz, R & B and funk, is setting out with his band on The XX Tour, playing the new album and other songs from his hit-filled songbook. An exuberant performer, Culbertson has amassed 30 Billboard No. 1 singles and a deep catalogue.



## BLUE MAN GROUP

NOV 21 & 22 | 7:30 PM

IKEDA THEATER | \$38 - \$78

BLUE MAN GROUP's new North American Tour is everything you know and love about BLUE MAN GROUP—signature drumming, colorful moments of creativity and quirky comedy—the men are still blue, but the rest is all new! Featuring, original music, custom-made instruments, surprise audience interaction and hilarious absurdity, join the Blue Men in a joyful experience that unites audiences of all ages.



Photo Credit: Evan Zimmerman for MurphyMade



NOV  
25

## UNDER THE STREETLAMP: HIP TO THE HOLIDAYS

FRI, NOV 25 | 8:00 PM | IKEDA THEATER | \$36 - \$74

Let's get Hip to the Holidays, as Under the Streetlamp celebrates with a joyous performance of your favorite holiday tunes plus songs from the American Radio Songbook. Oh what fun it is to dance in the aisles while merrily singing along to songs from their live PBS Specials and studio album, Hip to the Holidays.

## TRINITY: CLASSICALLY IRISH

SAT, NOV 26 | 8:00 PM | IKEDA THEATER | \$19.50 - \$55.00

Three accomplished young Irish singers make up the cast of PBS's newest Celtic music project – Trinity. Three great voices matched with the most beloved Irish songs and great new arrangements for symphony orchestra add up to a magical musical experience. Trinity's appearance with the Gulf Coast Symphony Orchestra in Fort Myers is the World Premiere of a trio with the musical DNA to become America's "next big thing" in Irish music. *Presented in partnership with Emporium Presents.*



ON SALE JUN 27

NOV  
26



## MANNHEIM STEAMROLLER CHRISTMAS BY CHIP DAVIS

SUN, NOV 27 | 3:00 PM & 7:30 PM | IKEDA THEATER | \$35 - \$80

A Mesa Arts Center holiday favorite returns! In 1984, Mannheim Steamroller released Mannheim Steamroller Christmas, an album that changed the sounds of Christmas and resulted in a runaway hit. Mannheim Steamroller went on to become the biggest selling Christmas music artist in history. The group's Christmas tour has become a holiday tradition right along with decorating the tree. *Presented in partnership with Magic Space Entertainment.*

## DAVE KOZ & FRIENDS 25TH ANNIVERSARY CHRISTMAS TOUR SPECIAL GUESTS DAVID BENOIT, RICK BRAUN, PETER WHITE AND REBECCA JADE

WED, DEC 14 | 7:30 PM IKEDA THEATER | \$66.50 - \$97.50\*

### VIP PACKAGES AVAILABLE

Dave Koz & Friends continue their annual holiday tradition at Mesa Arts Center! With nine GRAMMY® nominations, nine No. 1 albums on Billboard's Current Contemporary Jazz Albums chart, and a Star on the Hollywood Walk of Fame, saxophonist Dave Koz has maintained a commitment to celebrating the magic of the holiday season like few other artists of his genre or generation. \*Every ticket purchase includes a digital music download.



## STRAIGHT NO CHASER: THE 25TH ANNIVERSARY TOUR

TUE, DEC 27 | 7:30 PM | IKEDA THEATER | \$25 - \$69.50

If the phrase "male a cappella group" conjures up an image of students in blue blazers, ties, and khakis singing traditional college songs on ivied campuses... think again. Straight No Chaser (SNC) are neither strait-laced nor straight-faced, but neither are they vaudeville-style kitsch. Straight No Chaser is the real deal, the captivating sound of nine unadulterated human voices coming together to make extraordinary music that is moving people in a fundamental sense... and with a sense of humor. *Presented in partnership with Emporium Presents.*

## THE SMOTHERS BROTHERS

FRI, JAN 20 | 8:00 PM | IKEDA THEATER | \$36 - \$84

Join America's favorite brothers, Tom and Dick Smothers, in person for an evening of memories and laughter featuring classic 'Comedy Hour' clips and interactive audience Q&A. Find out who mom really likes best.







Photo Credit: Todd Rosenberg Photography

## THE CHICAGO SYMPHONY ORCHESTRA WITH RICCARDO MUTI, CONDUCTOR

SUN, JAN 22 | 7:30 PM | IKEDA THEATER | \$65 - \$215

Since September 2010, Chicago Symphony Orchestra (CSO) has been under the baton of renowned Italian conductor Riccardo Muti. This program is a rare opportunity to see one of the world's leading orchestras in the extraordinary and acoustically excellent 1,510 seat Ikeda Theater. Recordings by CSO have earned an astounding total of 63 GRAMMY® awards.

The program of the evening will be:

BEETHOVEN: *Coriolan Overture*

BEETHOVEN: *Symphony No. 8*

LIADOV: *The Enchanted Lake*

MUSSORGSKY: *Pictures from an Exhibition*



Photo Credit: Gabriela Gabriela

## EMMET COHEN TRIO

WED, JAN 25 | 7:30 PM | PIPER THEATER | \$42

Multifaceted American jazz pianist and composer Emmet Cohen was recognized as a prodigy at age three, and his playing quickly became a mature melding of musicality, technique and concept. Possessing a fluid technique an innovative tonal palette and an extensive repertoire, Cohen plays with the command and passion of an artist fully devoted to his medium.

## PILOBOLUS: BIG FIVE OH!

FRI, JAN 27 | 8:00 PM | IKEDA THEATER | \$32 - \$52

For this 50th anniversary celebration, Pilobolus questions its own “givens,” turns its traditions sideways, and brings its past into the future. As fresh and vibrant as ever, Pilobolus –that feisty arts organism– puts the “Oh!” in BIG FIVE OH!, and continues to morph its way thrillingly into audiences’ hearts and minds. The celebration includes signature works from vintage classics to their trend setting innovative work in shadow.



Photo Credit: Juliana Sohn

JAN  
27





FEB  
18

## KATHLEEN TURNER: FINDING MY VOICE

SAT, FEB 18 | 7:30 PM | PIPER THEATER | \$54 - \$84

VIP AVAILABLE

A once-in-a-lifetime chance to see a true Hollywood legend on stage, *KATHLEEN TURNER: FINDING MY VOICE* is a deeply personal show packed with humor, great music, and one-of-a-kind insights spanning her extensive and exciting career. Kathleen Turner croons hits showcasing her trademark husky voice, including “Let’s Fall in Love,” “I’d Rather Be Sailing,” “On the Street Where You Live,” and “Every Time We Say Goodbye” while sharing behind the scenes stories of her illustrious career in Hollywood.

## ITZHAK PERLMAN RECITAL WITH ROHAN DE SILVA

SUN, FEB 19 | 7:30 PM | IKEDA THEATER | \$50 - \$115

Itzhak Perlman enjoys superstar status rarely afforded to a classical musician. Beloved for his charm and humanity as well as his talent, he is treasured by audiences throughout the world who respond not only to his remarkable artistry, but also to the irrepressible joy of making music, which he communicates.

FEB  
19



Photo Credit: © Masterclass.com



FEB  
23

## THE MOTH MAINSTAGE

THU, FEB 23 | 7:30 PM | IKEDA THEATER | \$33 - \$48

The Moth is true stories, told live and without notes. We celebrate the ability of true, personal storytelling to illuminate both the diversity and commonality of human experience. Our work allows people all over the world and from all walks of life to share their stories on stage in front of a live audience. The Moth brings the power of personal storytelling to millions of people each year—creating community and building empathy around the world.

Photo Credit: Laura Partain



FEB  
24

## PENN & TELLER

FRI, FEB 24 | 8:00 PM | IKEDA THEATER | \$46 - \$86

For over 40 years Penn & Teller have defied labels—and at times physics and good taste—by redefining the genre of magic and inventing their own very distinct niche in comedy. The duo has enjoyed sold out runs on Broadway, world tours, EMMY-winning TV specials and hundreds of outrageous appearances on everything from *Fallon* to *Friends*, *The Simpsons* to *Colbert*, *Modern Family* to *Top Chef*. Currently, they have a hit series called *Penn & Teller: Fool Us!* for The CW Network, on which up-and-comers and magic veterans try to fool Penn & Teller for a chance to star in the pair's hit Las Vegas stage show.

## OUR PLANET LIVE IN CONCERT

SAT, FEB 25 | 8:00 PM | IKEDA THEATER | \$40 - \$85

OUR PLANET LIVE IN CONCERT combines HD cinematography with all-new orchestrations by Oscar®-winning composer Steven Price performed by a live onstage orchestra. A journey of discovery across our planet featuring narration by legendary broadcaster David Attenborough, this mesmerizing concert is a celebration of the planet we call home – welcoming audiences to be fully immersed into the wonders of earth's wildlife and their habitats. Part of the profits from the *Our Planet* live project will be donated to WWF's education and awareness initiatives.



FEB  
25

Photo Credit: © Kieran O'Donovan/Silverback/Netflix



MAR  
3

## THE QUEEN'S CARTOONISTS

FRI, MAR 3 | 7:30 PM | PIPER THEATER | \$45

The Queen's Cartoonists perform music from cartoons! TQC's performances are perfectly synchronized to the films projected on stage. The band matches the energy of the cartoons, leading the audience through a world of virtuosic musicianship, multi-instrumental mayhem and comedy. Projections of animated films dazzle the audience, while the band re-creates original soundtracks note-for-note or writes their own fresh compositions to modern pieces.

Photo Credit: Lauren Desberg

## MANIA THE ABBA TRIBUTE

SAT, MAR 4 | 8:00 PM | IKEDA THEATER | \$25 - \$55

It has now been 31 years since Abba last toured. In 1979 requests for tickets far outstripped availability with two Royal Albert Hall performances receiving 2 million requests for tickets, with only 5000 available. In short, it was the hottest ticket in town. Even today Mania The ABBA Tribute continues to grip the nation with countless tributes on television, radio and of course with the hugely popular stage hit *Mamma Mia*, now a feature film, so there are no signs that this popularity is slowing down! *Presented in partnership with Emporium Presents.*



## STOMP

MAR 9 – MAR 12 | TIMES VARY  
IKEDA THEATER | \$38 - \$68

“STOMP can’t be beat! Infectious, Inventive Pulse-Pounding Entertainment! A Roaring Good Time!”

-San Francisco Chronicle

Matchboxes, brooms, garbage cans, Zippo lighters and more fill the stage with energizing beats at STOMP, the inventive and invigorating stage show that’s dance, music and theatrical performance blended together in one electrifying rhythm. STOMP. See what all the noise is about.



## BLACK VIOLIN

FRI, MAR 17 | 8:00 PM | IKEDA THEATER | \$42 - \$68

Black Violin is led by classically trained string players Wil B. (viola) and Kev Marcus (violin). Joining them onstage are DJ SPS and drummer Nat Stokes. The band uses their unique blend of classical and hip-hop, often described as “classical boom,” music to overcome stereotypes while encouraging people of all ages, races and economic backgrounds to join together to break down cultural barriers.





## A WHOLE NEW WORLD OF ALAN MENKEN

FRI, MAR 31 | 8:00 PM | IKEDA THEATER | \$45 - \$90

In his multimedia show, composer Alan Menken leads audiences on a journey through more than thirty years of hit songs, movies, and musicals - *The Little Mermaid*, *Aladdin*, *Beauty & the Beast*, *Enchanted*, *Tangled* and more! In his first one-man show, the legendary storyteller sings some of his best-loved tunes while accompanying himself on the piano, and through video and a multimedia experience, shares the secrets of his journey from “Sesame Street” to premiering three simultaneous shows on Broadway.

## SIMPLY THREE

SAT, APR 15 | 8:00 PM | IKEDA THEATER | \$34 - \$45

Simply Three returns to Mesa Arts Center with stunning visuals and exhilarating new music. This classically trained string trio destroys boundaries and pushes limits by adding their flair and innovation to popular arrangements and new compositions. Watch Simply Three shred strings before your eyes with a full visual show featuring rock, pop and original music in a way you’ve never heard before.



## UKULELE ORCHESTRA OF GREAT BRITAIN

TUE, APR 25 | 7:30 PM | IKEDA THEATER | \$36 - \$44

“Moderation in all things, including Moderation!” The Ukulele Orchestra of Great Britain gives you more. There’s music, irreverent wit and wicked fun transcending language and nationality; a requiem for rock and popular culture. Rebels: lasting longer than the Beatles and Led Zep, with more gigs than the Rolling Stones, funnier than the Berlin Philharmonic, rocking harder than Dwayne Johnson, the UOGB brings you “One Plucking Thing After Another.”

## RIVERDANCE 25 YEARS OF RIVERDANCE

MAY 3 - 7 | TIMES VARY | IKEDA THEATER | \$38 - \$78

For over 25 years, nothing has carried the energy, the sensuality and the spectacle of Riverdance. A powerful and stirring reinvention of this beloved favorite, celebrated the world over for its thrilling energy and passion of its Irish and international dance. Immerse yourself in the extraordinary power and grace of its music and dance—beloved by fans of all ages.





# MIRAGE

SUMMER MUSIC SERIES

NEW THIS SEASON! BEAT THE SUMMER HEAT EVERY SAT  
FROM JUN 25 - AUG 27! TICKETS ARE \$11 PER SHOW OR \$100\*  
FOR A SUBSCRIPTION TO THE TEN-SHOW SERIES.

\*Plus service fee

SPACHI



Photo Credit: Timothy Duffy

## DOM FLEMONS

SAT, JUN 25 | 7:30 PM  
PIPER THEATER | \$11 GA

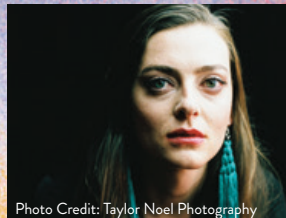


Photo Credit: Taylor Noel Photography

## RISING SUN DAUGHTER

SAT, JUL 30 | 7:30 PM  
PIPER THEATER | \$11 GA



Photo Credit:  
Julius Schlosburg

## XIXA

SAT, JUL 2 | 7:30 PM  
PIPER THEATER | \$11 GA



Photo Credit:  
Travis Haight

## CALIFONE

SAT, AUG 6 | 7:30 PM  
PIPER THEATER | \$11 GA

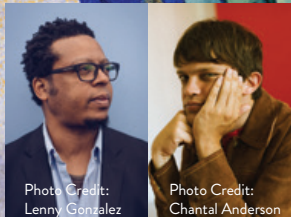


Photo Credit:  
Lenny Gonzalez

Photo Credit:  
Chantal Anderson

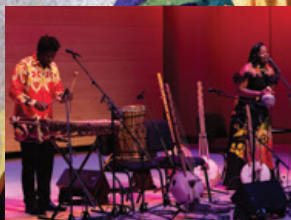
## JEFF PARKER AND WILLIAM TYLER

SAT, JUL 9 | 7:30 PM  
PIPER THEATER | \$11 GA



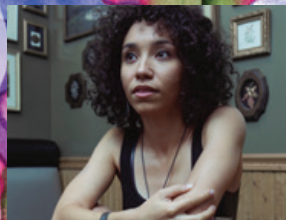
## RAQUEL DENIS

SAT, AUG 13 | 7:30 PM  
PIPER THEATER | \$11 GA



## AROUNA AND ZAZA DIARRA AROUNA DIARRA MUSIC

SAT, JUL 16 | 7:30 PM  
PIPER THEATER | \$11 GA



## CARLY BATES

SAT, AUG 20 | 7:30 PM  
PIPER THEATER | \$11 GA



## QAIS ESSAR

SAT, JUL 23 | 7:30 PM  
PIPER THEATER | \$11 GA



## DOWNTOWN CHAMBER SERIES FEATURING THE MILL AVE CHAMBER PLAYERS

SAT, AUG 27 | 7:30 PM  
PIPER THEATER | \$11 GA



# NAT GEO LIVE



**NATIONAL GEOGRAPHIC LIVE SERIES  
TICKETS AND RENEWALS START AT \$105\*:**

NATIONAL PRESENTING SPONSOR:



MESA ARTS CENTER SERIES SPONSOR:



An Independent Licensee of the Blue Cross and Blue Shield Association

## **DIANA MAGALONI-KERPEL | ART HISTORIAN & MICROARCHAEOLOGIST**

### **MESOAMERICA ILLUMINATED**

**WED, OCT 19 | 7:30 PM | IKEDA THEATER | \$31 - \$45**

Discover how the iconic Olmec heads of Mexico were created, explore the true meaning behind the imposing Teotihuacan pyramids and get a peek into the culture and daily life in the Mayan city of Chichen Itza. Join art historian and microarchaeologist Dr. Diana Magaloni-Kerpel as she brings ancient Mesoamerican civilizations to life in a way you've never seen before.



**OCT  
19**

**NOV  
16**



Photo Credit: © NOAA OER

## **DIVA AMON | MARINE BIOLOGIST**

### **FROM SHALLOWS TO SEAFLOOR**

**WED, NOV 16 | 7:30 PM | IKEDA THEATER | \$31 - \$45**

Marine biologist Diva Amon's research on unusual deep-sea habitats and species has taken her to extraordinary depths in some of the remotest parts of the planet. Get to know the fascinating creatures in each unique layer of Earth's massive underwater habitat. She'll share stories from her work in the Caribbean the Pacific, and beyond, along with images that shine a light on this vast—and vital—reservoir of biodiversity.

\*Plus service fee





JAN  
18

## ALIZÉ CARRÈRE | ENVIRONMENTAL ANTHROPOLOGIST & FILMMAKER

### ADAPTATION

WED, JAN 18 | 7:30 PM | IKEDA THEATER | \$31 - \$45

Explore the remarkable ways people around the world are adapting to our changing planet with environmental anthropologist and filmmaker Alizé Carrère. From the floating gardens of Bangladesh to the ice pyramids of northern India, Carrère offers a hopeful look at the resilience, perseverance and innovation of humankind under even the most difficult of conditions.

## LINDSAY ZANNO | PALEONTOLOGIST

### T. REX RISES

WED, MAR 22 | 7:30 PM | IKEDA THEATER | \$31 - \$45

How did T. rex become the iconic apex predator of North America 67 million years ago? Paleontologist Dr. Lindsay Zanno is uncovering the answer. Each year she spends several months on expedition, scouring the badlands of western North America in search of clues. Join Dr. Zanno for a fascinating look at how a global climate crisis during the Cretaceous changed the course of evolution for this prehistoric tyrant and its ancestors.



MAR  
22

Photo Credit: © Jorge Gonzalez



APR  
12

## MAUREEN BECK | PARACLIMBER

### IMPROBABLE ASCENT

WED, APR 12 | 7:30 PM | IKEDA THEATER | \$31 - \$45

Paraclimber Maureen Beck learned how to rock climb one-handed through trial and error — one of her early adaptive climbing innovations involved taping a metal ladle to her arm. It wasn't long before she was tackling some of the hardest climbs by a one-handed athlete, securing two world championships in the process. With her trademark humor and wit, this 2019 National Geographic Adventurer of the Year will chronicle her journey as one of the foremost leaders in the sport of paraclimbing.

Photo Credit: © Kris Ugarriza

# CLASSICAL MUSIC INSIDE OUT

TENTH ANNIVERSARY | 2022-2023

## SUBSCRIBER PACKAGE BENEFITS

- One ticket to each performance
- One voucher good for a pair of tickets to the Adam Golka show on Oct 6
- Invitation for you and a guest to a subscriber-only preshow reception with Zuill Bailey on Oct 6 at 6:00 PM

## CLASSICAL MUSIC INSIDE OUT PACKAGE PRICING STARTS AT \$110\*

Classical Music Inside Out is under the artistic direction of GRAMMY® Award-winning Cellist Zuill Bailey. Zuill Bailey is underwritten by Bill Passey and Maria Silva. Educational Support for Classical Music Inside Out provided by the Gloria Miner Charitable Music Foundation.

\*Plus service fee

### ADAM GOLKA, PIANO

THU, OCT 6 | 7:30 PM | PIPER THEATER | \$30 - \$42

Polish-American pianist Adam Golka is a concerto soloist. He has appeared with dozens of orchestras and symphonies around the world. Currently, Adam is touring with a recital featuring Beethoven's *Les Adieux*, Liszt's *Sonata*, Grażyna Bacewicz's *Piano Sonata No. 2*, as well as etudes by Nicolai Kapustin and his own *Relevant Etude* (2021).



### LAUREATES OF THE SPHINX COMPETITION KEBRA-SEYOUN CHARLES, DOUBLE BASS JONATHAN OKSENIUK, VIOLIN

**SPHINX**  
Aaron P. Dworkin • Founder

THU, NOV 10 | 7:30 PM | PIPER THEATER | \$30 - \$42

The Sphinx Competition is a national competition offering young Black and Latinx classical string players a chance to compete under the guidance of a renowned panel of judges and to perform with and receive mentorship from established professional musicians. For 2022, Kebra-Seyoun Charles, double bass, is the Senior Division winner and Jonathan Okseniuk, violin, is the Junior Division winner. Both will perform at Mesa Arts Center as part of the Classical Music Inside Out series.



## AWADAGIN PRATT AND MAXWELL QUARTET

THU, JAN 19 | 7:30 PM | PIPER THEATER | \$30 - \$42

Pianist Awadagin Pratt is acclaimed for his musical insight and intensely involving performances in recital and with symphony orchestras. The Maxwell Quartet consists of four great friends who grew up playing classical and folk music together in youth orchestras. Maxwell Quartet and Awadagin will play together on a piece entitled "Clouds," a piano quintet by the Jamaican-British composer Eleanor Alberga, who is one of the most prominent Black female composers in the world.

## ZUILL BAILEY, ARTISTIC DIRECTOR CELEBRATING THE BACH CELLO SUITES

THU, MAR 2 | 7:30 PM | PIPER THEATER | \$30 - \$42

Zuill Bailey, widely considered one of the premiere cellists in the world, is a distinguished soloist, recitalist, Artistic Director and teacher. In 2021, Zuill released *The Complete Bach Cello Suites* and will Celebrate the Bach Cello Suites during his performance at Mesa Arts Center.



## EROICA TRIO

THU, APR 6 | 7:30 PM | PIPER THEATER | \$30 - \$42

Eroica Trio is Erika Nickrenz (piano), Sara Parkins (violin) and Sara Sant'Ambrogio (cello). The GRAMMY® nominated Eroica Trio enraptures audiences with flawless technical virtuosity, irresistible enthusiasm and sensual elegance. Their performance will include a broad range of repertoire spanning hundreds of years as well as the quintessential "Eroica" programs with an eclectic mix of exclusive, original arrangements and pieces composed for them.



# MESA ARTS CENTER



## FESTIVALS

### SEASON KICKOFF FESTIVAL MAKE YOUR MARK

FRI, SEP 9 | 6:00 – 10:00 PM

### DÍA DE LOS MUERTOS FESTIVAL

SAT, OCT 22 | 10:00 AM – 5:00 PM

SUN, OCT 23 | 10:00 AM – 5:00 PM

The National League of Cities has selected Mesa as the 2022 Cultural Diversity Awards winner for the annual Día de los Muertos celebration.

### FALL OUT TO LUNCH CONCERT SERIES

THURSDAYS, OCT 27 - DEC 8\*

12:30 PM – 1:30 PM | FREE

\*No concert on Nov 24

### EMERGE FESTIVAL: EATING AT THE EDGES

SAT, NOV 19 | 12:00 - 7:00 PM

Presented in partnership with  
Arizona State University



## VOLUNTEERS

Volunteer at Mesa Arts Center. Give back to the community while enjoying and supporting the arts!

[MESAARTSCENTER.COM/GETINVOLVED](https://MESAARTSCENTER.COM/GETINVOLVED)



Ron English, King Combrat, Oil on canvas, 48 x 48 inches.

## MESA CONTEMPORARY ARTS MUSEUM

### FALL 2022 OPENING RECEPTION & SEASON KICKOFF:

FRI, SEP 9 | 6:00 – 10:00 PM

The fall exhibitions feature legendary provocateur Ron English, who is best known for blending of American iconography with art history themes to create social, political commentaries on contemporary American society. In partnership with Spoke Art, MCA Museum will also host the Moleskin project, which consists of over 150 sketchbooks by emerging and established artists. Solo features include graffiti artists Such Styles and Champ Styles, Filipino artist Reen Bareera and Japanese American and Korean American husband and wife artist team GIORGIKO.

### MCA Museum SUMMER CLOSURE:

Aug 8 - Sep 9 2022

[MESAARTSCENTER.COM/MUSEUM](https://MESAARTSCENTER.COM/MUSEUM)



## ART STUDIOS

### FALL 2022 OPEN ENROLLMENT:

TUE, JUL 12, 2022 | NOON

### WINTER/SPRING 2022

### OPEN ENROLLMENT:

TUE, NOV 8, 2022 | NOON

Explore Mesa Arts Center's state-of-the-art visual and performing arts studios! Spark your creativity with a class in ceramics, watercolors, printmaking, glass fusing, metal sculpture and more!

[MESAARTSCENTER.COM/CLASSES](https://MESAARTSCENTER.COM/CLASSES)

### SUMMER ARTS CAMPS!

Join us for Summer Arts Camps at Mesa Arts Center! Choose from jewelry, printmaking, drawing/painting, ceramics, photography, digital storytelling and more this summer! Camp programs are designed to provide unique and engaging arts experiences for youth, pre-teens and teens in our state-of-the-art studio classrooms.

[MESAARTSCENTER.COM/YOUTHCAMPS](https://MESAARTSCENTER.COM/YOUTHCAMPS)



## ARTS IN SERVICE

Thanks to generous grants from The Boeing Company, Salt River Pima Maricopa Indian Community and funding in part by Arizona Department of Veterans' Services as made available through the Arizona Veterans' Donation Fund, Mesa Art Center's Arts in Service program provides creative pathways for veterans and service members to use studio arts experiences in reaching their personal goals.

**Fall 2022** Arts in Service Class Registration begins Fri, Jul 8 | Noon

**Winter/Spring 2022** Arts in Service Class Registration begins Fri, Nov 11 | Noon  
[MESAARTSCENTER.COM/ARTSINSERVICE](https://MESAARTSCENTER.COM/ARTSINSERVICE)



## MEMBERSHIP

### EXPERIENCE THE BENEFITS!

- Advance notice & presales for Performing Live shows
- Special member events and VIP receptions
- 10% off at Art Studio Classes
- 10% discount at The Store

[MESAARTSCENTER.COM/JOINTHECIRCLE](https://MESAARTSCENTER.COM/JOINTHECIRCLE)



## ENGAGEMENT

### THE COLLECTIVE A CREATIVE LEADERSHIP PROGRAM

The Collective is a certificate program that builds leadership skills through creative thinking and practices. Applications for the 2023 Collective Cohort open Oct 1 – Nov 1, 2022.

[MESAARTSCENTER.COM/THECOLLECTIVE](https://MESAARTSCENTER.COM/THECOLLECTIVE)

### EDUCATOR PREVIEW NIGHT

**SAVE THE DATE | AUGUST 18, 2022**  
**4:30 - 6:30 PM | MESA ARTS CENTER**  
**MOBILIZE YOUR TEAM!** Get a sneak peek at our arts and cultural offerings for schools for 2022-23! **FREE.**

[MESAARTSCENTER.COM/EDAPPRECIATION](https://MESAARTSCENTER.COM/EDAPPRECIATION)

### MABEL

MABEL, (Mobile Art Based Engagement Lab) is an adaptable and flexible creative space and pop-up arts center on wheels with activities meant to create connections on the spot, prompt discussion, catalyze change and spark creativity through the arts.

[MESAARTSCENTER.COM/MABEL](https://MESAARTSCENTER.COM/MABEL)

## FOUNDING RESIDENT COMPANIES & \*RESIDENT COMPANY

### SYMPHONY OF THE SOUTHWEST

With Youth Symphony of the Southwest  
 Oct 29, 2022  
 Holiday Concert | Dec 10, 2022

### YOUTH SYMPHONY OF THE SOUTHWEST

Sep 12, 2022  
 Oct 29, 2022\*  
 Dec 5, 2022  
 (\*With Symphony of the Southwest)

### BALLET ETUDES

The Nutcracker | Dec 10 – 18, 2022

### SOUTHWEST SHAKESPEARE CO.

Southwest Shakespeare Fall Repertory  
 Oct 7 – 30, 2022

### MESA ENCORE THEATRE Stay Tuned for Shows and Dates!

### EAST VALLEY CHILDREN'S THEATRE

The Lion King Jr. | Sep 22 – Oct 2, 2022  
 Yes, Virginia, There is a Santa Claus  
 Dec 1 – 11, 2022

### METROPOLITAN YOUTH SYMPHONY MYS Fall Concert | Nov 9, 2022

### \*SALT RIVER BRASS

Band-o-Rama | Oct 16, 2022  
 American Salute | Nov 13, 2022  
 Holiday Pops | Dec 11, 2022



**MATT FRASER**  
**AMERICA'S TOP PSYCHIC MEDIUM**  
JUL 9, 2022

**KURTIS CONNER**  
AUG 7, 2022

**AMERICA**  
AUG 21, 2022

**WHOSE LIVE ANYWAY?**  
SEP 8, 2022

**CLANNAD**  
SEP 13, 2022

**MARIACHI HERENCIA**  
**DE MEXICO WITH SPECIAL GUEST**  
**LUPITA INFANTE:**  
**CUANDO MEXICO CANTA**  
SEP 17, 2022

**THE MUSIC OF CREAM**  
SEP 24, 2022

**CMIO: ADAM GOLKA, PIANO**  
OCT 6, 2022

**TOWER OF POWER**  
OCT 7, 2022

**NELLA**  
OCT 14, 2022

**NAT GEO LIVE: DIANA**  
**MAGALONI-KERPEL -**  
**MESOAMERICA ILLUMINATED**  
OCT 19, 2022

**THE FAB FOUR -**  
**THE ULTIMATE TRIBUTE**  
OCT 22, 2022

**WARDRUNA**  
NOV 5, 2022

**BELINDA CARLISLE**  
NOV 6, 2022

**CMIO: LAUREATES OF**  
**THE SPHINX COMPETITION**  
NOV 10, 2022

**LILA DOWNS**  
NOV 12, 2022

**NAT GEO LIVE: DIVA AMON -**  
**FROM SHALLOWS TO SEAFLOOR**  
NOV 16, 2022

**DISNEY'S DCAPPELLA**  
NOV 17, 2022

**BRIAN CULBERTSON**  
NOV 20, 2022

**BLUE MAN GROUP**  
NOV 21 & 22

**UNDER THE STREETLAMP:**  
**HIP TO THE HOLIDAYS**  
NOV 25, 2022

**TRINITY: CLASSICALLY IRISH**  
NOV 26, 2022

**MANNHEIM STEAMROLLER**  
**CHRISTMAS BY CHIP DAVIS**  
NOV 27, 2022

**DAVE KOZ &**  
**FRIENDS CHRISTMAS 2022**  
DEC 14, 2022

**STRAIGHT NO CHASER**  
DEC 27, 2022

**NAT GEO LIVE: ALIZÉ CARRÈRE -**  
**ADAPTATION**  
JAN 18, 2023

**CMIO: AWADAGIN PRATT**  
**AND MAXWELL QUARTET**  
JAN 19, 2023

**THE SMOTHERS BROTHERS**  
JAN 20, 2023

**CHICAGO SYMPHONY ORCHESTRA**  
JAN 22, 2023

**EMMET COHEN TRIO**  
JAN 25, 2023

**PILOBOLUS**  
JAN 27, 2023

**KATHLEEN TURNER:**  
**FINDING MY VOICE**  
FEB 18, 2023

**ITZHAK PERLMAN RECITAL**  
**WITH ROHAN DE SILVA**  
FEB 19, 2023

**THE MOTH MAINSTAGE**  
FEB 23, 2023

**PENN AND TELLER**  
FEB 24, 2023

**OUR PLANET LIVE IN CONCERT**  
FEB 25, 2023

**ZUILL BAILEY, CELEBRATING**  
**THE BACH CELLO SUITES**  
MAR 2, 2023

**THE QUEEN'S CARTOONISTS**  
MAR 3, 2023

**MANIA THE ABBA TRIBUTE**  
MAR 4, 2023

**STOMP**  
MAR 9 - 12

**BLACK VIOLIN**  
MAR 17, 2023

**NAT GEO LIVE: LINDSAY ZANNO -**  
**T. REX RISES**  
MAR 22, 2023

**A WHOLE NEW WORLD**  
**OF ALAN MENKEN**  
MAR 31, 2023

**CMIO: EROICA TRIO**  
APR 6, 2023

**NAT GEO LIVE: MAUREEN BECK -**  
**IMPROBABLE ASCENT**  
APR 12, 2023

**SIMPLY THREE**  
APR 15, 2023

**UKULELE ORCHESTRA**  
**OF GREAT BRITAIN**  
APR 25, 2023

**RIVERDANCE**  
MAY 3 - 7, 2023



Photo Credit: © Jorge Gonzalez

## THANK YOU TO OUR MESA ARTS CENTER PARTNERS:

