



MESA ARTS CENTER

# PERFORMING LIVE

24/25 SEASON

20  
YEARS



MESA  
ARTS  
CENTER

mesa-az

# DEAR FRIENDS



As the new Director of Arts and Culture for the City of Mesa and Executive Director for Mesa Arts Center, I could not be more excited and proud to join this amazing cultural, scientific, creative and educational community! With our exemplary arts and culture staff and four world-class facilities, we have unlimited potential to be the leading transformative force for arts and culture in the Valley.

Over 20 years ago, the redesign and reconstruction of Mesa Arts Center was the dream of a herculean and dedicated committee of citizens and stakeholders. They came together, took their collective passion and forged what we now know as Mesa Arts Center. Today, Mesa Arts Center exists to provide you and our community, with performing and visual arts appreciation, multi-generational arts education and engagement experiences.

In celebration of our 20th Anniversary Season, we are pulling out all the stops in our theaters and galleries! On our stages, Deputy Director for Performing Live, Randy Vogel, has curated a line-up of artistic perfection — a hand-picked repertoire of nationally and internationally renowned artists and performances. From the mesmerizing vocal talents of Idina Menzel to the soulful melodies of Samara Joy, from the heart pounding excitement of Kodo to the captivating movements of Alvin Ailey American Dance Theater, our stages are set to entertain audiences of all tastes and preferences. Also, just in time for our stellar 20th celebration, this year, we introduce a new Broadway Series, and the return of beloved series such as Classical Music Inside Out and National Geographic Live.

Mesa Contemporary Arts Museum will also dazzle and astound with exhibitions including “Materializing Mormonism: Trajectories in Contemporary Latter-day Saint Art” and “46th Annual Contemporary Crafts.” Our museum curatorial team has worked tirelessly to showcase thought provoking and diverse contemporary art and artists!

At Mesa Arts Center, our aim is to create gathering places centered around exemplary performances, stimulating exhibitions and enriching educational experiences! Inside and outside our walls, our entire staff seeks to compliment the beauty of life — and give you an escape and a thrilling opportunity to experience art in all its forms.

During a recent performance on our stage, the legendary cellist Yo-Yo Ma eloquently said it best, “Culture connects us, imagination inspires us, there’s nothing we can’t do when we work together in good faith.” Mesa Arts and Culture agrees!

I look forward to welcoming you to our theaters and galleries to witness the transformative power of the arts for yourself.

Kindest regards,

Richard M. Parison, Jr.  
*Director of Arts & Culture*  
*Executive Director, Mesa Arts Center*





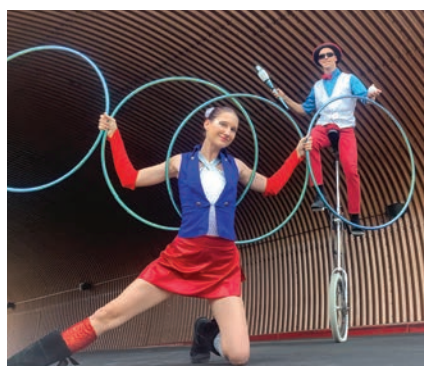


## IL DIVO | XX: 20TH ANNIVERSARY TOUR

**TUE, JUL 16 | 7:30 PM | IKEDA THEATER | \$69.50 - \$189.50**

Twenty years of life, music and brotherhood have only enlivened, enhanced and enriched Il Divo. Like a fine wine bettered by time, the group's individual notes, accents and signatures have fully bloomed over the course of a storied career. Now, the iconic quartet — Urs Bühler (tenor), Sébastien Izambard (tenor), David Miller (tenor) and Steven LaBrie (baritone) — uphold the spirit of their signature sound, while expanding its scope on their tenth full-length offering and very first independent album, "XX: 20th Anniversary Album."

**Presented in partnership with Live Nation.**



## THE CIRCUS FARM

**JUL 14, 21 & 28 | 1:00 PM & 3:00 PM | NESBITT-ELLIOTT PLAYHOUSE | \$12\***

Escape the summer heat and join us for a family-friendly Mesa Arts Center experience. The day features a 60-minute air-conditioned family circus, with games, balloons, juggling, unicycle stunts, a hula hoop, LED lighted props, a giant robot and Aerial Lollipop. Enjoy hands-on arts activities from Mesa Arts Center's engagement programs, and as an added experience, you may use your ticket for \$2.00 off admission to either Arizona Museum of Natural History or i.d.e.a. Museum for up to fourteen days after the performance date.

**\*\$2 off tickets for groups of four or more.**



## IDINA MENZEL

**THU, JUL 25 | 7:30 PM | IKEDA THEATER | \$60 - \$125**

Idina Menzel is a powerhouse multi-hyphenate: a singer, an actress in film and TV, a songwriter, a Broadway star and a philanthropist. She rose to fame for her role as Maureen in the popular Broadway musical *Rent*, and her career took off when she won a Tony Award for her role as Elphaba, the Wicked Witch of the West, in the smash musical "Wicked." Her voice can be heard as Elsa in Disney's Oscar®-winning "Frozen." The New York Times praised Menzel as "an entertainer with a phenomenal voice ... Diana Ross with ten times the stamina and lung power."



## LATE NITE CATECHISM

**FRI, AUG 2 - SUN, SEP 1 | TIMES VARY | FARNSWORTH STUDIO | \$50**

Call it Loretta Young meets Carol Burnett, this interactive show is part catechism class and part stand up routine. You, the audience members, are part of this sister's class. She'll take you back to the days of Latin Mass, meatless Fridays and remind you about that good old ruler across the knuckles.

**Group sales are available.**

**MAC MCANALLY****WED, AUG 7 | 7:30 PM | PIPER THEATER | \$57 - \$87**

Ten time CMA Musician of the Year, Mac McAnally is a Nashville Songwriters HoF, Mississippi Musicians HoF and Alabama Music HoF inductee. The songwriter, singer and instrumentalist has written dozens of hit records for other artists, several of which peaked at number one. His own recording career began with the debut hit single “It’s A Crazy World” and has grown to 14 album releases. He has written hits for Alabama, Jimmy Buffett, Kenny Chesney and Sawyer Brown, and has studio credits that include albums by Toby Keith, Linda Ronstadt, George Strait and Dolly Parton among many others.

**SCOTT BRADLEE'S POSTMODERN JUKEBOX  
THE “10” TOUR****THU, AUG 8 | 7:30 PM | IKEDA THEATER | \$35 - \$110 | VIP AVAILABLE**

Famed “Pop music in a Time Machine” concert act Postmodern Jukebox has announced a new World Tour to celebrate the dual milestone of their 10th anniversary of touring and their 1,000th show in 2024. Dubbed The ‘10’ Tour, concertgoers can expect a dazzling, inspiring trip through the PMJ Universe — where modern-day earworms and iconic pop hits alike are reimagined in classic genres like 1920s jazz, Swing, Doo-wop and Motown, and brought to life by a cast of some of the world’s best singers, dancers and instrumentalists.

**ANA BARBARA | LA REINA GRUPERA TOUR****SAT, SEP 7 | 8:00 PM | IKEDA THEATER | \$40 - \$125**

Ana presentará en el escenario sus 30 años de carrera los cuales la llevaron a estar entre las artistas más destacadas del Regional Mexicano como compositora y cantante. Ha destacado siempre por su poderosa voz logrando grabar más de 15 álbumes de estudio a lo largo de su carrera, muchos de los cuales han obtenido certificaciones de oro y platino. Ha ganado varios premios y reconocimientos por su música, incluyendo un Latin Grammy, Premios Billboard de la Música Latina, Premios Lo Nuestro y Premios Juventud. Es considerada una de las artistas más influyentes y representativas de la música regional mexicana por sus decenas de éxitos en los charts de popularidad de México y Latinoamérica y ha sido una importante embajadora de la cultura mexicana en todo el mundo. **COMEDIA EN ESPAÑOL.**

Ana’s concert will present music of her 30-year career which led her to be one of the biggest singers and composers of Mexican Regional music. She has always stood out for her powerful voice, recording more than 15 studio albums throughout her career, many of which have earned gold and platinum certifications. She has won many awards and recognitions for her music, including a Latin Grammy, Billboard Latin Music Awards, Premios Lo Nuestro and Premios Juventud. She is considered one of the most influential artists of regional Mexican music for her dozens of hits on the popularity charts in Mexico and Latin America and has been an important ambassador of Mexican culture around the world. **PERFORMED IN SPANISH.**



## **I COULD BE WRONG, I COULD BE RIGHT: AN INTIMATE EVENING WITH JOHN LYDON (AKA JOHNNY ROTTEN)**

**SAT, SEP 7 | 7:30 PM | PIPER THEATER | \$35.50 - \$45.50 | VIP AVAILABLE**

Lydon will reflect on the Sex Pistols, Public Image Limited (PiL), his art and his life's story during an informal evening of conversation and audience questions. An icon, a revolutionary and an immortal, as the frontman and lyricist of the Sex Pistols, Johnny Rotten changed the face of music and sparked a cultural revolution. He caused an earthquake which transformed music for good.

**Presented in partnership with Patchwork Presents.**

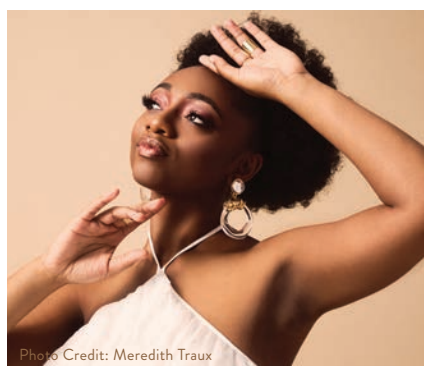


Photo Credit: Meredith Traux

## **SAMARA JOY**

**THU, SEP 19 | 7:30 PM | IKEDA THEATER | \$40 - \$85**

With her upcoming Verve Records debut, "Linger Awhile," Samara makes her case to join the likes of Sarah, Ella and Billie as the next mononymous jazz singer. She won GRAMMYs® for Best New Artist and Jazz Vocal Album of the year in 2023 and Improvised Jazz Solo in 2024. On "Linger Awhile," Samara will introduce a new generation to a slew of classic standards several times older than she is through her timeless, irresistible sound.



Photo Credit: Chino Lemus

## **LILA DOWNS**

**SUN, SEP 22 | 7:30 PM | IKEDA THEATER | \$35 - \$50**

Winner of six Latin GRAMMYs® and one GRAMMY®, celebrated singer Lila Downs is one of the most powerful and unique voices that exist today. With a symbolic stage presence and emotional storytelling through song, her singing transcends all language barriers. Lila Downs's music embraces influences from the folkloric and ranchera music of Mexico to the music of the southern United States, crossing barriers and generating sounds that go from Folk, Jazz, Folkloric Blues, Indígena and ranchera to Hip Hop.

*Ganadora del GRAMMY® y de seis Latin GRAMMY®, la cantante Lila Downs es una de las voces más poderosas y singulares que existen hoy en día. Su simbólica presencia en un escenario contando conmovedoras historias, ha trascendido todas las barreras del lenguaje. Con influencias que van desde la música folklórica y ranchera de México hasta la música del sur de estados unidos cruzando barreras y generando sonidos que van desde el Folk, Jazz, Blues Folklórica, Indígena, y ranchera hasta el Hip Hop. Las letras de Lila Downs a menudo marcan relatos enfocados desde la injusticia social, hasta las historias suprimidas de Latinoamérica de mujeres de orígenes indígenas y trabajadoras.*





## KANSAS | ANOTHER FORK IN THE ROAD 50TH ANNIVERSARY TOUR

**FRI, SEP 27 | 7:30 PM | IKEDA THEATER | \$50 - \$140 | VIP AVAILABLE**

With a legendary career spanning five decades, KANSAS has firmly established itself as one of America's iconic classic rock bands. This "garage band" from Topeka released their debut album in 1974 and have gone on to sell more than 30 million albums worldwide. Fans will hear songs spanning 50 years of KANSAS music including hits such as "Carry On Wayward Son," "Dust in the Wind" and "Fight Fire with Fire" and deep cuts that have rarely been played live.



## NINJA KIDZ LIVE | INFINITE POSSIBILITIES

**SUN, SEP 29 | 4:00 PM | IKEDA THEATER | \$40**

It's time to enter the multi-verse. The Ninja Kidz are leaping out of your screens and into your city with Ninja Kidz Live: Infinite Possibilities. The fate of the universe hangs in balance as imposters threaten to infiltrate a stage near you. Join us for the first ever Ninja Kidz live action adventure filled with audience participation, physical challenges, games and epic battles. What happens when two worlds collide? The audience holds the key to shape how each adventure unfolds with an infinite number of possible outcomes. Get ready to laugh, cheer and determine destiny, one choice at a time.

**Presented in partnership with MagicSpace Entertainment.**

**CELEBRATE THE MUSIC & LEGACY OF JIMI HENDRIX**

## EXPERIENCE HENDRIX

**TOGETHER ON ONE STAGE  
PERFORMING THE MUSIC  
OF JIMI HENDRIX**

**FEATURING  
KENNY WAYNE SHEPHERD  
ZAKK WYLDE  
ERIC JOHNSON  
TAJ MAHAL**

**AND MANY MORE ARTISTS  
TO BE ANNOUNCED...**

★ **THE CONCERT EVENT OF THE YEAR!** ★

EXPERIENCEHENDRIXTOUR.COM

## EXPERIENCE HENDRIX

**FRI, OCT 4 | 7:30 PM**

**IKEDA THEATER | \$55 - \$115**

The Experience Hendrix Tour evokes the era when artists treated each performance as a unique interaction with their audience. Jimi Hendrix called this his "Electric Church." The Experience Hendrix Tour fully embraces this approach, presenting multiple opportunities for performers and audiences to witness unique collaborations among the participating artists and will highlight these artists performing their favorite Hendrix signature songs including "Little Wing," "Fire," "Purple Haze" and "Voodoo Child."



## CARLOS BALLARTA | TLATOANI

**SAT, OCT 12 | 8:00 PM | IKEDA THEATER | \$53.50 - \$63.50**

Conoce a este comediante de stand up mexicano: Carlos Ballarta. Es hilarante. Es sarcástico. Y roquea un gran par de lentes como nadie más. A la edad de 33 años, ya tiene 3 especiales completos en netflix y uno en YouTube, “Rebelde Comodino.” En 2023, Carlos fue el primer hedliner de habla hispana en participar en el famoso festival Just For Laughs en Montreal. Te reirás toda la noche con sus críticos comentarios sobre cultura, religión, política, paternidad y la rareza de la vida cotidiana.

**CONTIENE CONTENIDO Y LENGUAJE PARA ADULTOS. COMEDIA EN ESPAÑOL.**

Meet the hot new stand-up comic out of Mexico: Carlos Ballarta. He’s hilarious. He’s edgy. And he rocks a pair of giant sunglasses like nobody else. At the age of 32, he already has three full-length Netflix specials and a new YouTube special, “Rebelde Comodino.” In 2023, Carlos became the first headliner to perform in Spanish in the 41-year history of the famous Just For Laughs comedy festival. You’ll laugh all night with his sharp takes on culture, religion, politics, family and the weirdness of everyday life. **CONTAINS ADULT CONTENT AND LANGUAGE.**

**PERFORMED IN SPANISH.**

**Presented in partnership with Patchwork Presents.**



## THE BLACK JACKET SYMPHONY PRESENTS ELTON JOHN'S "MADMAN ACROSS THE WATER"

**WED, OCT 23 | 7:30 PM | IKEDA THEATER | \$27.50 - \$45.00**

Remember putting on an album and listening from start to finish? Relive that moment with a live concert experience unlike any other as The Black Jacket Symphony recreates Elton John’s iconic album “Madman Across the Water” live in its entirety — plus a full set of Elton John’s greatest hits. It’s a full night of rock and roll magic — plus a visual experience unlike any other.

**Presented in partnership with Emporium Presents.**



## CROCE PLAYS CROCE | 50TH ANNIVERSARY TOUR

**FRI, NOV 1 | 8:00 PM | IKEDA THEATER | \$49.50 - \$79.50**

With more than 50 million records sold, Jim Croce’s legacy as an iconic singer/songwriter is firmly cemented. A.J. Croce, a singer, songwriter, multi-instrumentalist and performer, returns this fall, bringing Jim’s classic songs to the stage with his “Croce Plays Croce 50th Anniversary Tour.”

**Presented in partnership with Patchwork Presents.**

**ROBERT GLASPER****SAT, NOV 9 | 8:00 PM | IKEDA THEATER | \$37 - \$77**

Robert Glasper is the leader of a new sonic paradigm with a career that bridges musical and artistic genres. To date, he boasts five GRAMMY® wins and 11 nominations across 11 categories. His work and accolades bridge all aspects of the music business, from live touring to film scoring, composing and producing. Glasper is an artist at the heart of a moment — and a movement — to champion Black music, Black people and the possibility of a better future.

**VITAMIN STRING QUARTET****THU, NOV 14 | 7:30 PM | PIPER THEATER | \$45**

Experience fresh, classical-inspired takes on your favorite hits—plus selections from the Quartet’s latest album, “VSQ Performs Taylor Swift.” The ensemble’s atmospheric arrangements have earned more than 1.5 billion streams and have been featured on Netflix’s *Bridgerton* and HBO’s *The King of Staten Island*.

**COME FROM AWAY****FRI, NOV 15 - SUN, NOV 17 | TIMES VARY | IKEDA THEATER | \$45 - \$95**

On 9/11, the world stopped. On 9/12, their stories moved us all. This stirring and inspiring musical takes you into the heart of the remarkable true story of the small town in Newfoundland that opened their homes to 7,000 stranded travelers on 9/11. During that fateful week, cultures clashed and nerves ran high — but uneasiness turned into trust, music soared into the night and gratitude grew into enduring friendships. Celebrate the best of humankind and the best in all of us at COME FROM AWAY.

**THE FAB FOUR | USA MEETS THE BEATLES!****FRI, NOV 29 | 7:30 PM | IKEDA THEATER | \$32.50 - \$64.50**

The Fab Four is elevated far above every other Beatles Tribute due to their precise attention to detail. This incredible stage show includes three costume changes representing every era of the Beatles ever-changing career. Hear such classics as “Can’t Buy Me Love,” “Yesterday,” “Here Comes the Sun” and “Hey Jude.”

**Presented in partnership with Emporium Presents.**





## ENCANTO: THE SING-ALONG FILM CONCERT

**TUE, NOV 19 | 7:00 PM**

**IKEDA THEATER | \$20 - \$40**

AMP and Disney Concerts presents "ENCANTO: THE SING-ALONG FILM CONCERT" National Tour! Experience the film ENCANTO while singing along with its chart-topping hits, performed by a live band. Produced by AMP Worldwide, "Encanto: The Sing-Along Film Concert" will include all the music of the Academy Award®-winning film performed live. Fans are encouraged to dress up as Mirabel, Luisa, Isabela or any of their favorite characters from the film and to use their voices to transform each venue into one big celebration of the Madrigal family.





## THE MAN WHO KILLED SANTA CLAUS

**FRI, NOV 29 | 4:00 PM & 7:30 PM | PIPER THEATER | \$10**

Join Mesa Mayor John Giles for an original holiday event featuring “The Man Who Killed Santa Claus,” a true story of triumph over failure set in Downtown Mesa dating back to 1932. Held immediately before and after the lighting of the Merry Main Street Christmas tree in Downtown Mesa, the event includes original live music and will be recorded for a future episode of the “It’s Always Cool in Mesa” podcast, also hosted by Mayor Giles.

**Presented by It’s Always Cool in Mesa, the podcast.**



## BIG BAND HOLIDAYS

### JAZZ AT LINCOLN CENTER ORCHESTRA FEATURING EKEP NKWELLE AND ROBBIE LEE

**SUN, DEC 8 | 7:30 PM | IKEDA THEATER | \$35 - \$65**

The Jazz at Lincoln Center Orchestra (JLCO) spreads holiday cheer on its annual Big Band Holidays tour. Jazz at Lincoln Center rising star vocalists Ekep Nkwelle and Robbie Lee join the JLCO to bring Yuletide greetings. Under the music direction of JLCO trombonist, Chris Crenshaw, the evening will feature soulful renditions of holiday classics, playful improvisation and entertaining storytelling. Enjoyed by audiences of all ages, these uplifting performances create lasting memories that will keep you returning to Big Band Holidays for years to come.



## THE ILLUSIONISTS | MAGIC OF THE HOLIDAYS

**THU, DEC 12 | 7:30 PM | IKEDA THEATER | \$54.50 - \$94.50**

Celebrate the holidays with the entire family at “The Illusionists — Magic of the Holidays,” a mind-blowing showcase featuring jaw-dropping talents of the most incredible illusionists on earth. The Illusionists has shattered box office records across the globe and dazzles audiences of all ages with a powerful mix of the most outrageous and astonishing acts ever seen on stage. This non-stop show is packed with thrilling and sophisticated magic of unprecedented proportions.

**Presented in partnership with Patchwork Presents.**



## DAVE KOZ & FRIENDS | CHRISTMAS 2024 TOUR

**WED, DEC 18 | 7:30 PM | IKEDA THEATER | \$66 - \$98 | VIP AVAILABLE**

Dave Koz & Friends continue their annual holiday tradition at Mesa Arts Center! With nine GRAMMY® nominations, nine No. 1 albums on Billboard’s Current Contemporary Jazz Albums chart, and a Star on the Hollywood Walk of Fame, saxophonist Dave Koz has maintained a commitment to celebrating the magic of the holiday season like few other artists of his genre or generation.

Photo Credit: Matt Christine Photography



# MANNHEIM STEAMROLLER CHRISTMAS



Photo Credit: Matt Christine Photography

## **MANNHEIM STEAMROLLER CHRISTMAS BY CHIP DAVIS**

**TUE, DEC 10 & WED, DEC 11 | 7:30 PM**

**IKEDA THEATER | \$40 - \$85**

MANNHEIM STEAMROLLER CHRISTMAS by Chip Davis has been America's favorite holiday tradition for more than 35 years! GRAMMY® Award winner Chip Davis has created a show that features Mannheim Steamroller Christmas classics in the distinctive Mannheim sound. The program includes 15 musicians playing more than 20 instruments against a backdrop of dazzling multimedia effects — capturing the spirit of the season in an immersive yet intimate setting.





## GENTRI CHRISTMAS

**THU, DEC 19 | 8:00 PM | IKEDA THEATER | \$45 - \$125**

Experience the transformative power of GENTRI Christmas. Be moved by their heartfelt performances of beloved classics like “Oh Holy Night,” “Little Drummer Boy” and “Silent Night.” Prepare to be swept away as GENTRI weaves their musical mastery, powerful harmonies and heartfelt storytelling into a tapestry of pure Christmas wonder. Join us for an unforgettable night of music, laughter and pure Christmas joy with GENTRI.

**Presented in partnership with MagicSpace Entertainment.**



## ITZHAK PERLMAN | IN THE FIDDLER'S HOUSE

**THU, JAN 23 | 7:30 PM | IKEDA THEATER | \$60 - \$160**

Itzhak Perlman, reigning virtuoso of the violin, presents his collection of traditional klezmer music, In the Fiddler's House. Released more than 25 years ago, the album became a PBS special that earned Perlman his third Emmy Award. Perlman returns to this project, offering the opportunity to witness not only his masterful technique and remarkable artistry, but also “to see and hear a gifted musician experiencing the pleasure of getting in contact with his roots” (Los Angeles Times).



## AN INTIMATE EVENING WITH DAVID FOSTER AND KATHARINE MCPHEE

**SUN, JAN 26 | 3:00 PM & 7:30 PM | IKEDA THEATER | \$40 - \$90**

Sixteen-time GRAMMY® award-winning musician, songwriter, and producer David Foster and acclaimed singer, television and Broadway star Katharine McPhee are bringing their LIVE show on the road. This intimate show, with the powerhouse duo, will be packed with David's Hits from Chicago, Whitney Houston, Celine Dion, Josh Groban, Michael Buble, etc. and Katharine's biggest songs from “American Idol,” “Smash” and “Waitress.” Plus some of their favorites that they just love.



## KODO

**SAT, FEB 8 | 8:00 PM | IKEDA THEATER | \$35 - \$85**

Exploring the limitless possibilities of the traditional Japanese drum, the taiko, Kodo is forging new directions for a vibrant living art-form. In Japanese, the word “Kodo” conveys two meanings: firstly, “heartbeat,” the primal source of all rhythm. Secondly, read in a different way, the word can mean “children of the drum,” a reflection of Kodo's desire to play the drums simply, with the heart of a child.



## BALLET FOLKLÓRICO DE MÉXICO DE AMALIA HERNÁNDEZ

**SAT, FEB 15 | 8:00 PM | IKEDA THEATER | \$32 - \$57**

Amalia Hernández was a dancer and choreographer, founder of the Ballet Folklórico de México in 1952. Hernández began a long journey through Mexican culture that would lead her to rescue the traditional dances around Mexico. She managed to project to the world the beauty of our country through movement, from pre-Columbian cultures and Spanish influences to the revolutionary times. With her first performances in 1952, she obtained public recognition as a cultural representative of Mexico. Her great success established the Ballet in the Palace of Fine Arts as its permanent venue.

*Amalia Hernández fue una bailarina y coreógrafa, fundadora en 1952 del Ballet Folklórico de México. Hernández inició un largo trayecto por la cultura mexicana que la llevaría a rescatar las danzas tradicionales de los diversos rincones de México. Ella logró proyectar ante el mundo la belleza de las diferentes regiones de nuestro país a través del movimiento, desde las culturas precolombinas, las influencias españolas en la época del virreinato hasta la fuerza popular de los tiempos revolucionarios. Con sus primeras presentaciones en 1952 obtuvo el reconocimiento del público como representante cultural de México. Su gran éxito logró establecer al Ballet en el Palacio de Bellas Artes como su sede permanente.*



## ALTON BROWN | LAST BITE – THE FAREWELL TOUR

**SUN, APR 6 | 3:00 PM & 7:30 PM | IKEDA THEATER | \$43 - \$204**

**VIP AVAILABLE**

Alton Brown was directing TV commercials when he got the crazy idea to go to culinary school and reinvent the cooking show. The result was “Good Eats,” an irreverent, science-forward program that kept Brown gainfully employed for over twenty years. In Alton Brown Live: Last Bite, the famed foodist reflects on his decades in food media, presents several of his favorite culinary mega-hacks, sings some of his funny food songs, and in general offers a culinary variety show the likes of which human eyes have never seen.



Photo Credit: Cedric Angeles

## TERENCE BLANCHARD

**SUN, APR 13 | 7:30 PM | IKEDA THEATER | \$30 - \$50**

Terence Blanchard has been a consistent artistic force for making powerful musical statements concerning painful American tragedies — past and present. A true “Renaissance” man, Blanchard stands tall as one of jazz’s most-esteemed trumpeters and defies expectations by creating a spectrum of artistic pursuits. Boundary-breaking and genre-defying, Blanchard is recognized globally as a dazzling soloist and a prolific composer for film, television, opera, Broadway, orchestras and for his own ensembles.



## JOSHUA KANE | BORDERS OF THE MIND

THU, APR 17 - SAT, APR 19 | TIMES VARY

NESBITT ELLIOTT PLAYHOUSE | \$40

Can he read your mind? Discover your inner superhero in Mentalist Joshua Kane's amazing interactive performance. Entire audiences experience simultaneous telepathy, and witness dazzling feats of lie detection and what must be psychic phenomena. People of all ages leap to participate in the strange happenings at the Borders of the Mind. In 2022 the Psychic Entertainers Association awarded Joshua the Dunninger Memorial Award, their highest honor, "Awarded for Distinguished Professionalism in the Performance of Mentalism."



Pictured: Samantha Figgins  
Photo Credit: Dario Calmese

## ALVIN AILEY AMERICAN DANCE THEATER

FRI, APR 18 & SAT, APR 19 | 8:00 PM

IKEDA THEATER | \$48 - \$74

Celebrating over 65 years of unparalleled artistry, Alvin Ailey American Dance Theater never fails to remind us of the power of dance to bring people together. These dancers dazzle with their trademark technical brilliance and passionate energy and bring audiences to their feet at every performance. The ground-breaking, forward-thinking company returns with new and classic works, including founder Alvin Ailey's masterpiece Revelations, the "Ailey gift that somehow keeps on giving" (The New York Times).

Matthew Rushing — Interim Artistic Director



## INSIDIOUS | THE FURTHER YOU FEAR

FRI, MAY 16 & SAT, MAY 17 | 8:00 PM | IKEDA THEATER | \$45 - \$85

The terrifying world of INSIDIOUS™ comes to life in INSIDIOUS: THE FURTHER YOU FEAR, an immersive horror experience that truly blurs the lines between reality and fiction. Join a live ghost-hunting seminar led by the notorious Spectral Sightings team, only to watch as it descends into a bone-chilling nightmare, transforming the safety of our world into the ominous realm of The Further. Your courage will be tested as you meet face-to-face with the darkest entities from the INSIDIOUS™ saga, in an experience so vivid and frightening that will keep you glued to your seat from start to finish.





MESA ARTS CENTER  
FOUNDATION



**MESA ARTS CENTER  
20TH ANNIVERSARY  
FOUNDATION GALA**  
SAT, MAR 15 | 5:30 PM

Join us as we celebrate 20 years of visual and performing arts at Mesa Arts Center. The Gala will feature live entertainment, dinner, cocktails and more! Proceeds will benefit Mesa Arts Center Foundation and Mesa Arts Center's engagement programs.

For sponsorship and gala ticket information, please call: **480-644-6604** or email [MEMBERSHIP@MESAARTSCENTER.COM](mailto:MEMBERSHIP@MESAARTSCENTER.COM).

BROADWAY SUBSCRIPTION PACKAGE PRICING STARTS AT \$117



### DEAR EVAN HANSEN

FRI, FEB 28 - SUN, MAR 2 | TIMES VARY

IKEDA THEATER | \$45 - \$95

DEAR EVAN HANSEN is the first contemporary musical about connection in the digital age. Meet Evan Hansen, a high school student who always feels like he's on the outside looking in. After writing a letter to himself that was never meant to be seen, Evan becomes entangled in a lie that was never meant to be told and a life he never dreamt could be his. As a result, Evan finally gets what so many of us are searching for — the chance to finally fit in. Packed with some of the most popular musical theatre songs from the last decade including "You Will Be Found," "Waving Through A Window" and "For Forever," DEAR EVAN HANSEN features an uplifting score by the Tony®, GRAMMY® and Oscar®-winning team behind "The Greatest Showman," Benj Pasek and Justin Paul, and a book by Tony® Award winner Steven Levenson.



### THE CHER SHOW

FRI, MAR 28 - SUN, MAR 30 | TIMES VARY

IKEDA THEATER | \$45 - \$95

Superstars come and go. Cher is forever. For six straight decades, only one unstoppable force has flat-out dominated popular culture — breaking down barriers, pushing boundaries and letting nothing and no one stand in her way. THE CHER SHOW is the Tony Award®-winning musical of her story, and it's packed with so much Cher that it takes three women to play her: the kid starting out, the glam pop star and the icon. THE CHER SHOW is 35 smash hits, six decades of stardom, two rock-star husbands, a GRAMMY®, an Oscar®, an Emmy®, and enough Tony® Award-winning Bob Mackie gowns to cause a sequin shortage in New York City, all in one unabashedly fabulous new musical that will have audiences dancing in the aisles!





# COME FROM AWAY



## COME FROM AWAY

FRI, NOV 15 - SUN, NOV 17

TIMES VARY | IKEDA THEATER

\$45 - \$95

On 9/11, the world stopped. On 9/12, their stories moved us all. This stirring and inspiring musical takes you into the heart of the remarkable true story of the small town in Newfoundland that opened their homes to 7,000 stranded travelers on 9/11. During that fateful week, cultures clashed and nerves ran high — but uneasiness turned into trust, music soared into the night and gratitude grew into enduring friendships. Celebrate the best of humankind and the best in all of us at COME FROM AWAY.





# CLASSICAL MUSIC INSIDE OUT SERIES

CLASSICAL MUSIC INSIDE OUT SUBSCRIPTION PRICING STARTS AT \$143\*

## SUBSCRIBER PACKAGE BENEFITS

- Discounted subscription pricing
- One ticket to each performance
- One Preshow Reception

Classical Music Inside Out is under the artistic direction of GRAMMY® Award-winning Cellist Zuill Bailey. Zuill Bailey is underwritten by Bill Passey and Maria Silva.

\*Plus service fee.



Photo Credit: Anja Schutz

### ROOMFUL OF TEETH

**WED, OCT 16 | 7:30 PM | PIPER THEATER | \$30 - \$45**

Roomful of Teeth is a two-time GRAMMY®-winning vocal band dedicated to reimagining the expressive potential of the human voice. By engaging collaboratively with artists, thinkers and community leaders from around the world, the group seeks to uplift and amplify voices old and new while creating and performing meaningful and adventurous music. As the world rapidly changes, Roomful of Teeth is cultivating deeper relationships with technology, continuing to expand the capabilities of the human voice, aiming to be unburdened by physical limitations.



Photo Credit: Jiyang Chen

### NJIOMA GREVIOUS

**WED, NOV 13 | 7:30 PM | PIPER THEATER | \$30 - \$45**

Described as “superb” by the Chicago Classical Review, violinist Njioma Chinyere Grevious is a passionate and versatile solo, chamber and orchestral musician and performer. She is a graduate of The Juilliard School and a winner of its John Erskine Prize for scholastic and artistic achievement. At Juilliard, the Abeo studied under the tutelage of the Juilliard String Quartet and has also been coached by members of the Alban Berg, Ebène, Takács, Artemis, Brentano, Miró and Emerson Quartet.



Photo Credit: Roy Cox

## **GALVIN CELLO QUARTET**

**WED, JAN 29 | 7:30 PM | PIPER THEATER | \$30 - \$45**

The Galvin Cello Quartet embodies virtuosity, with each member bringing their own artistic nuance and acclaimed background to the ensemble. With their untamable desire to create change, and ultimately bring joy through music, the Galvin Cello Quartet is more excited than ever to explore and expand the possibilities of the cello quartet. The group's mission is to bring together new works from diverse cultural backgrounds while seeking to establish the cello quartet as a core part of the classical music world.



Photo Credit: Shervin Lainez

## **IMANI WINDS**

**WED, MAR 5 | 7:30 PM**

**PIPER THEATER | \$30 - \$45**

Celebrating over a quarter century of music making, the twice GRAMMY®-nominated Imani Winds has led both a revolution and evolution of the wind quintet through their dynamic playing, adventurous programming, imaginative collaborations and outreach endeavors that have inspired audiences of all ages and backgrounds. The ensemble's playlist embraces traditional chamber music repertoire, and newly commissioned works from voices that reflect historical events and the times in which we currently live.



Photo Credit: Meadowood Media

## **MIKE BLOCK TRIO**

**WED, APR 9 | 7:30 PM | PIPER THEATER | \$30 - \$45**

Mike Block Trio, featuring Joe K. Walsh (mandolin/vocals) and Zachariah Hickman (bass/vocals), is led by cello player, singer and composer, Mike Block, who has been hailed as "one of the bravest, most intriguing musicians on the American fusion scene" by Gramophone Magazine. The trio fertilizes American roots music with contemporary and international influences, bringing an exciting and personal perspective to the acoustic music scene.



# NATIONAL GEOGRAPHIC LIVE SERIES

NATIONAL GEOGRAPHIC LIVE SUBSCRIPTIONS AND RENEWALS START AT \$119



NATIONAL  
GEOGRAPHIC

LIVE

SERIES SPONSOR:



BlueCross  
BlueShield  
Arizona

An Independent Licensee of the Blue Cross Blue Shield Association



Photo Credit: Andy Mann

## FROM SUMMIT TO SEA ANDY MANN | FILMMAKER & PHOTOGRAPHER

WED, OCT 9 | 7:30 PM

IKEDA THEATER | \$31 - \$48

National Geographic Explorer, filmmaker and photographer Andy Mann combines his passions with purpose as a voice for the world's ocean, following scientists to some of the most extreme locations to make imagery that can inspire change. He has dived alongside crocodiles, sperm whales and sharks and survived near misses with icebergs — all in pursuit of his goal: to reveal Earth's incredible ocean environments and advocate for their protection.



Photo Credit: Keith Ladzinski

## FROM ROOTS TO CANOPY NALINI NADKARNI TREE CANOPY ECOLOGIST

WED, NOV 6 | 7:30 PM | IKEDA THEATER | \$31 - \$48

Throughout human history, trees have provided our most important sources of sustenance, protection and wonder. National Geographic Explorer Nalini Nadkarni, a tree canopy ecologist, has spent four decades dangling among the branches to study the ways that forests inform our daily lives. Discover a whole new world in this awe-inspiring program. Nadkarni will reveal the magnificent wildlife and incredible science happening in the vast, hidden worlds suspended above our heads.





Photo Credit: Babak Tafreshi

## **EARTH AFTER DARK BABAK TAFRESHI PHOTOJOURNALIST & CINEMATOGRAPHER**

**WED, JAN 22 | 7:30 PM | IKEDA THEATER | \$31 - \$48**

Do you love the nightlife? Don't miss this fun National Geographic Live program exploring what happens after dark. Science photojournalist and National Geographic Explorer Babak Tafreshi has spent his career documenting the unbelievable beauty of the night sky and working to connect cultures through the common interest of looking up. Tafreshi will offer an illuminating look at what happens when night falls here on Earth, as he shares visual stories of wildlife, humanity and the cosmos.



Photo Credit: Birgitte McDonald

## **PENGUINS OF ANTARCTICA HEATHER JOAN LYNCH ECOLOGIST & CONSERVATION BIOLOGIST**

**WED, FEB 19 | 7:30 PM | IKEDA THEATER | \$31 - \$48**

Antarctica's name alone conjures imagery of the harshest environment on the planet, but it is more than its monochromatic color scheme of snow and ice. Despite being the world's driest, windiest and coldest continent, Antarctica still sustains life. Join National Geographic Explorer and quantitative ecologist Heather Lynch on an adventure to the South Pole to see how life, from penguins to whales, not only survives but also thrives at the end of the earth.

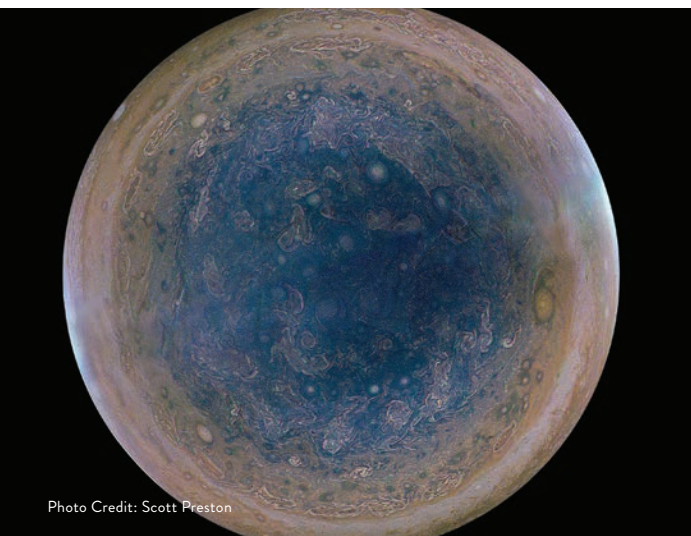


Photo Credit: Scott Preston

## **COSMIC ADVENTURES TRACY DRAIN | FLIGHT SYSTEMS ENGINEER**

**WED, MAR 26 | 7:30 PM | IKEDA THEATER | \$31 - \$48**

Discover the marvels of our cosmic backyard through the eyes of the robotic spacecraft sent out to explore it. National Geographic Explorer and aerospace engineer Tracy Drain works at NASA's Jet Propulsion Laboratory to develop, test and operate the complex machines that uncover some of the countless mysteries within and beyond our solar system. See out-of-this-world sights captured by robotic spacecraft on missions to answer some of the most intriguing questions about our universe.

## MIRAGE SUMMER MUSIC SERIES

# MIRAGE

## SUMMER MUSIC SERIES

JULY 20 - AUGUST 24

TICKETS ARE \$12 PER SHOW OR \$60 FOR A SUBSCRIPTION TO THE SIX-SHOW SERIES.

Caption: XIXA at Mesa Arts Center on July 2, 2022



**GIOVANNI KIYINGI**  
SAT, JUL 20 | 7:30 PM  
PIPER THEATER | \$12

**INKBLOT**  
SAT, JUL 27 | 7:30 PM  
PIPER THEATER | \$12

**DIRT RHODES**  
SAT, AUG 3 | 7:30 PM  
PIPER THEATER | \$12

**LAS CALAKAS**  
SAT, AUG 10 | 7:30 PM  
PIPER THEATER | \$12

**MORPHIA SLOW  
AND ROBIN VINING**  
SAT, AUG 17 | 7:30 PM  
PIPER THEATER | \$12

**DRIFTWOOD QUINTET**  
SAT, AUG 24 | 7:30 PM  
PIPER THEATER | \$12

PERFORMERS





## MESA CONTEMPORARY ARTS MUSEUM AT MESA ARTS CENTER

### SUMMER EXHIBITIONS 2024

Opening Reception | May 10 | 7:00 PM – 10:00 PM  
VIP/Member's Preview | 6:00 PM – 7:00 PM

Michael Farmer | Salvation in the Digital Age  
Jacqueline Chanda | Now and Then: The West Virginia Series  
Emily C. McPhie | CROWN: A Process of Enlightenment  
Center for Latter-Day Saint Arts | Materializing Mormonism:  
Trajectories in Contemporary Latter-day Saint Art

### FALL EXHIBITIONS 2024

Opening Reception | Sep 13 | 7:00 PM – 10:00 PM  
VIP/Member's Preview | 6:00 PM – 7:00 PM

Fibers and textiles have traditionally been used in all cultures of the world. The fall season will focus on fashion, fiber and wearable art featuring artists using innovative techniques and materials.

### SPRING EXHIBITIONS 2025

Opening Reception | Feb 14 | 7:00 PM – 10:00 PM  
VIP/Member's Preview | 6:00 PM – 7:00 PM

Join us for the 46th Annual Contemporary Craft exhibition. A national juried exhibition highlighting the finest in contemporary crafts from across the country including ceramics, fibers, basketry, metals, wood, glass and jewelry.





## ART STUDIOS



Credit: Slaven Guic

## OPEN ENROLLMENT

FALL 2024 | JUL 12 | 12:00 PM

Explore Mesa Arts Center's state-of-the-art visual and performing arts studios! Spark your creativity with a class in ceramics, watercolors, printmaking, glass fusing, metal sculpture and more!

[MESAARTSCENTER.COM/CLASSES](https://mesaartscenter.com/classes)

## ARTS IN SERVICE



Credit: Della Johnson

Mesa Arts Center's Arts in Service program provides creative pathways for veterans and service members to use studio arts experiences in reaching their personal goals.

## OPEN ENROLLMENT

FALL 2024 | JULY 9 | 12:00 PM

[MESAARTSCENTER.COM/ARTSINSERVICE](https://mesaartscenter.com/artsinservice)

Generously supported by The Boeing Company, Salt River Pima Maricopa Indian Community and National Endowment for the Arts.

## EDUCATOR APPRECIATION NIGHT

## SAVE THE DATE

THU, AUG 22, 2024 | 4:00 PM - 6:30 PM |

MESA ARTS CENTER

## MOBILIZE YOUR TEAM!

Enjoy food, performances and discover arts and culture resources at this fun and engaging evening event just for educators! **Admission is FREE!**

[MESAARTSCENTER.COM/EDAPPRECIATION](https://mesaartscenter.com/edappreciation)

## MABEL



## MABEL - MOBILE ART BASED ENGAGEMENT LAB

Mesa Arts Center takes community engagement on the road with MABEL! MABEL is an adaptable creative space and pop-up arts center on wheels with activities meant to create connections, prompt discussion, catalyze change and spark creativity through the arts.

[MESAARTSCENTER.COM/MABEL](https://mesaartscenter.com/mabel)

## LITERACY THROUGH DRAMA

Literacy through Drama is an arts program that uses creative play, drama and performance to improve literacy within a social emotional learning framework.

Programs include:

- Let's Play! Drama Storytime for Preschoolers
- Storybox Theatre — Creative Drama for Grades K-2nd

[MESAARTSCENTER.COM/LITERACYTHRU DRAMA](https://mesaartscenter.com/literacythrudrama)

## MESA ARTS CENTER THANKS OUR VALUED SUPPORTERS AND DONORS

**MAESTRO'S LEVEL**

KATHYE BROWN  
PAULA GIBSON

**CONDUCTOR'S LEVEL**

GRANT AND CAROLYN BAECKER  
CECIL AND KAREN LYNN  
KEN AND JAN DOWLIN

**DIRECTOR'S LEVEL**

FRANK AND BARBARA BENNETT  
FRANK BENNETT, JR.  
JUAN CARRILLO AND ANNIE HSU  
MICHAEL AND DEBORAH ELLIOTT  
SCOTT FEHRMAN AND  
ROBBYN MCDOWELL  
JOANIE FLATT  
ROSE AND BRIAN HANNE  
MIKE AND MARCIE HUTCHINSON  
HEIDI KIMBALL  
DR. RUTH TAN LIM  
VERNON MATHERN AND  
JANICE PARKER  
ANNE BENNETT AND TONY PEREZ  
WILLIAM AND PATRICIA NAUMANN  
RUTH NESBITT  
BILL PASSEY AND MARIA SILVA  
MICHAEL SCHWIMMER AND  
JACKIE SCHENKEIN  
JO AND DON WILSON  
ROBERT'S CATERING, INC.

**FOUNDERS LEVEL**

NICHOLAS J. ADAMSON  
VIRGINIA BERG  
KATHLEEN BONZANI  
ADAM BOYLE AND JESSICA WOLVEN  
LEE AND DAVID BROWN  
JERRY AND JANET DELAND  
GREG DESIMONE  
CLIFF AND MARILYN DOUGLAS  
HARRY GARRETT

CAROL HADDON  
PEARL HINTZE  
THOMAS HOULIHAN  
SCOTT JACKSON  
DR. NICOLLE KARANTINOS  
JAMES KIEFER  
ZYG AND SHARON KWASNICA  
MERRILY AND BOB METZGER  
LAURIE IKEDA MORGAN  
JERRY AND LIZ PAULUS  
PERRY AND TERESA PEARSON  
LARRY AND LINDA POBUDA  
TOM AND CHRIS RHODES  
PAUL ROMEO AND LYNNE STARK  
WILLIAM SCHMIDT AND  
DIRK ELLSWORTH  
DAWNYCE SCHUTZ  
DR. RANDY AND CHERYL SPENCER  
FRANCIS TESMER  
DR. RALPH AND MARILYN WILSON  
NANCY AND TED WOLTER  
STEVEN AND MARLA JO ZACHARY

**LEGACY CIRCLE SOCIETY**

CHARLES A. BEYER AND  
NANCY R. BEYER  
DEBBY AND MIKE ELLIOTT  
GERRY FATHAUER  
JOANIE FLATT  
MICHAEL FLATT  
PAULA GIBSON  
CHESTER AND ANN GOLDBERG  
ROSE HANNE  
MARCIE AND MIKE HUTCHINSON  
BILL PASSEY AND MARIA SILVA  
DR. WENDY L. STERNBERG,  
MRS. ANNE G. STERNBERG, AND  
DR. FRANK C. STERNBERG  
HILLARY AND STEVE WEST  
JO AND DON WILSON  
NANCY AND TED WOLTER

**MEMBERSHIP**

Membership provides insider opportunities and benefits, and Membership at Mesa Arts Center is one of the most affordable in the valley, starting at just \$60. Here are some of the perks you could enjoy as a member:

- Early access to tickets and preferred seating for Performing Live shows
- 10% discount on more than 1,000 classes in our visual and performing arts studios
- 10% discount at The Store, an artist cooperative gallery
- Concierge service from our membership office to help with your questions
- Parking passes and special receptions for Premier Circle Members

For questions about Mesa Arts Center membership, contact [membership@mesaartscenter.com](mailto:membership@mesaartscenter.com).





## FESTIVALS

**DÍA DE LOS MUERTOS FESTIVAL**

SAT, OCT 19 &amp; SUN, OCT 20

10:00 AM - 5:00 PM

**OUT TO LUNCH CONCERT SERIES**

THURSDAYS

FALL 2024: OCT 24 - DEC 5\*

SPRING 2025: FEB 20 - MAR 27

12:30 PM - 1:30 PM | FREE

\*No concert on Nov 29

[MESAARTSCENTER.COM/OTL](https://mesaartscenter.com/OTL)**SPRING FESTIVAL**

FRI, MAR 21, 2025

7:00 PM - 10:00 PM

## RESIDENT COMPANIES

**\*BALLET ETUDES**

THE NUTCRACKER | DEC 14 - DEC 22, 2024

BALLET ETUDES REPARATORY | SAT, MAR 8, 2025

**\*EAST VALLEY CHILDREN'S THEATRE**

SLEEPY HOLLOW THE MUSICAL | SEP 19 - 29, 2024

ELF JR. | DEC 5 - 15, 2024

THE UNDERGROUND ADVENTURES OF A CARROT AND POTATO  
FEB 13 - 23, 2025

FANTASTIC MR. FOX | APR 10 - 13, 2025

ALICE IN WONDERLAND | JUN 12 - 22, 2025

**\*MESA ENCORE THEATRE**

SEP 13 - SEP 29, 2024

NOV 1 - NOV 17, 2024

JAN 10 - JAN 26, 2025

FEB 28 - MAR 16, 2025

MAR 28 - APR 13, 2025

MAY 16 - JUN 1, 2025

**\*METROPOLITAN YOUTH SYMPHONY**

FALL CONCERT | WED, NOV 13, 2024

WINTER CONCERT | WED, FEB 26, 2025

SPRING CONCERT | WED, MAY 7, 2025

**\*SOUTHWEST SHAKESPEARE COMPANY**

OCT 11 - OCT 26, 2024

NOV 1 - NOV 9, 2024

FEB 7 - FEB 22, 2025

**\*YOUTH SYMPHONY OF THE SOUTHWEST**

MON, SEP 16, 2024

MON, OCT 28, 2024

DEC TBD

MON, FEB 10, 2025

**\*SYMPHONY OF THE SOUTHWEST**

SAT, NOV 2, 2024

SAT, DEC 14, 2024

SAT, FEB 22, 2025

SAT, APR 5, 2025

**SALT RIVER BRASS**

LEGENDS | SUN, NOV 10, 2024

WINTER WONDERLAND | SUN, DEC 15, 2024

WE'VE GOT RHYTHM! | SUN, FEB 23, 2025

\*Represents Founding Resident Companies



Arizona Museum  
of Natural History

# TIME FOR AN **EPOCH ADVENTURE!**

53 NORTH MACDONALD, MESA, AZ 85201 • 480-644-2230 • AZMNH.INFO@MESAAZ.GOV • AZMNH.ORG



## Explore and create at **i.d.e.a. Museum!**

STEAM Activities • Interactive Experiences  
Storytimes • One-of-a-Kind Exhibitions • And More!

**ideamuseum.org**



20  
YEARS



MESA  
ARTS  
CENTER

mesa-az

ONE EAST MAIN STREET | MESA, AZ 85201 | BOX OFFICE: 480-644-6500 | MESAARTSCENTER.COM



Photo Credit: Slaven Gujic



Photo Credit: Andy Mann



Photo Credit: Slaven Gujic

## THANK YOU TO OUR MESA ARTS CENTER SPONSORS

